

UNLESS OTHERWISE SPECIFIED

ERMCO COMPONENTS, INC.

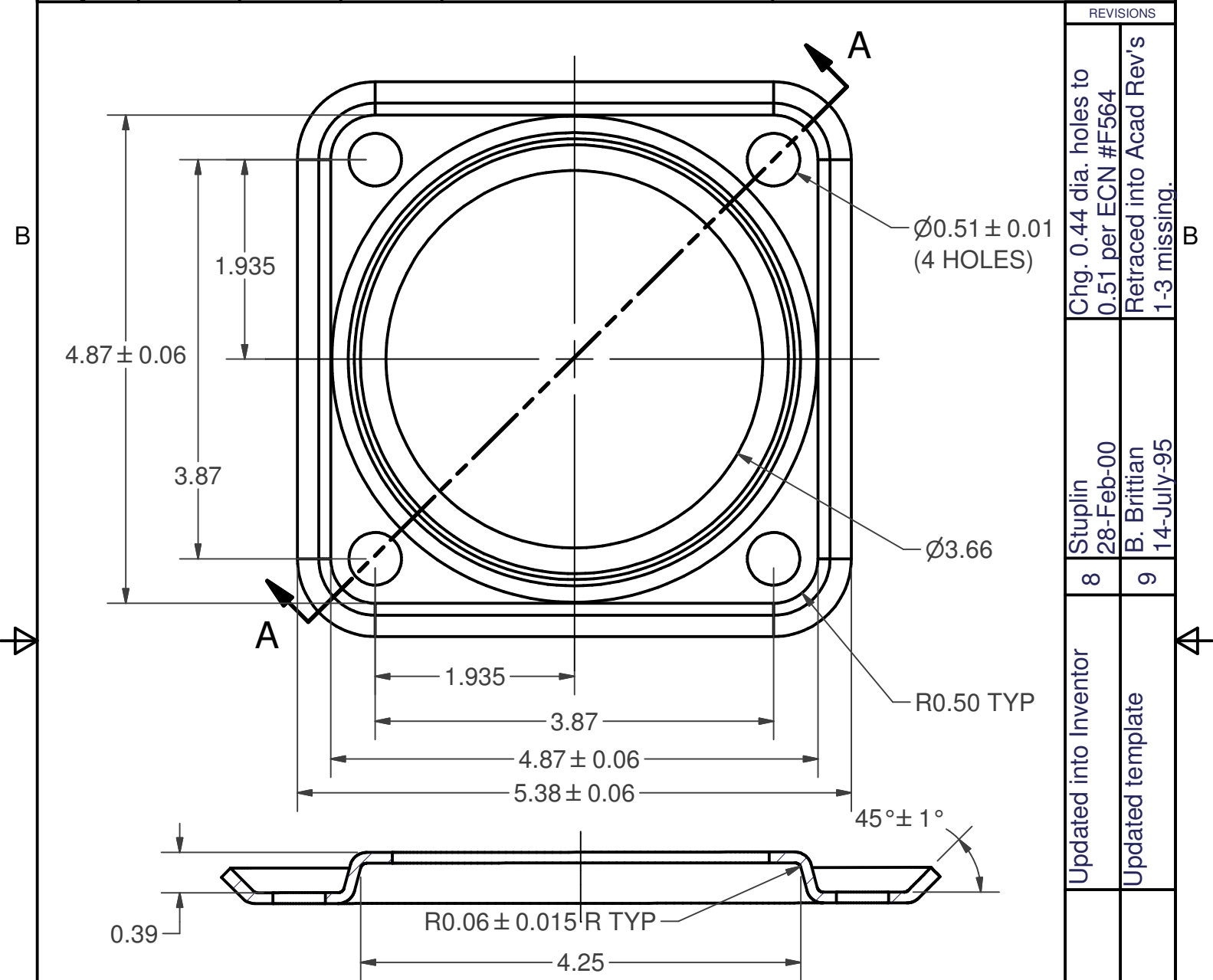
DWG NO. 2A023043

SURFACES  
✓

TOLERANCES		
2 PL DEC	3 PL DEC	ANGLES
± .010	± .005	±

THE INFORMATION CONTAINED ON THIS DOCUMENT IS PROPRIETARY TO ERMCO COMPONENTS, INC. AND MAY NOT BE USED FOR ANY OTHER PURPOSES THAN THOSE EXPRESSLY AUTHORIZED BY ECI.

SH TITLE: NUMBER OF SHS.  
**Clamp**  
FIRST MADE FOR:



**SECTION A-A**  
Gasket-DWG 32A026027

Part #	THK	Model # Clamp & Gasket	Material
01	.110	9U09AAW216	HR-LC STL Strip - Draw Quality B8A582 Except Rockwell "B" 60 Max (AISI 1008) (Zinc Chromate)
03	.100	9U09AAW262	CR-Chrom Nickle Stainless Steel Strip - Annealed - B7A65C3 (AISI Type 304)

REVISIONS

REV	DESCRIPTION	DATE	BY
8	Updated into Inventor	28-Feb-00	Stuplin
9	Updated template	14-July-95	B. Brittain
10	N. Adams	10/20/04	10
7	Stuplin	04-FEB-99	7

DRAWN BY: A. Millikan  
ISSUED BY: Nicholas Adams

ECN 9/8/1980  
APPROVAL  
ECI

DWG NO. 2A023043  
SH TITLE: NUMBER OF SHS.  
**Clamp**