

B2571K230
SH 1

COUNT ON SH 2

TITLE
OUTLINE (DRY WELL FUSEHOLDER)

FIRST MADE FOR
LOADBREAK METAL FLANGE

ERMCO COMPONENTS, INC.

UNLESS OTHERWISE SPECIFIED, TOLERANCES ARE

SURFACES	±	2 PL DEC	±	3 PL DEC	±	ANGLES	±	DEG
----------	---	----------	---	----------	---	--------	---	-----

ENGINEERING DATA			
FUSEHOLDER CAP	CATALOG NUMBER	7559ZB8299	7559ZB8399
PLATED STEEL	7559ZB8299	7559ZB8399	7559ZB8499
STAINLESS STEEL	7559ZB8299	7559ZB8399	7559ZB8499
"A"	5.59	6.89	5.59
"B"	19.96	25.64	19.96
"C"	4.33	5.63	4.33
MAX VOLTAGE RATING	8.3KV	15.2KV	8.3KV
BIL	95KV	125KV	95KV
HIPOT	34KV	40KV	34KV
CORONA EXTINCTION RATING (UNFUSED)	11KV	19KV	11KV
CONTINUOUS CURRENT RATING (UNFUSED)	160A	160A	160A
MOMENTARY CURRENT RATING (UNFUSED)	10,000 A RMS SWM (10 CYCLES)	10,000 A RMS SWM (10 CYCLES)	10,000 A RMS SWM (10 CYCLES)
ACCEPTABLE FUSES (GE SUREGUARD GP OR MCGRAW HY) (MUST BE ORDERED SEPARATELY)	2.8 & 4.3KV - ALL SIZES THRU 100A 5.5KV - ALL SIZES THRU 75A 8.3KV - ALL SIZES THRU 40A	15.5KV - ALL SIZES THRU 40A	2.8 & 4.3KV - ALL SIZES THRU 100A 5.5KV - ALL SIZES THRU 75A 8.3KV - ALL SIZES THRU 40A
LOAD MAKE & BREAK RATING 1φ	20 OPERATIONS AT 200A	10 OPERATIONS AT 200A	20 OPERATIONS AT 200A
LOAD MAKE & BREAK RATING 3φ	-----	SEE NOTE #1	10 OPERATIONS AT 150A (8.3KV - L) / 10 OPERATIONS AT 100A (4.3KV - L)
FAULT CLOSE-IN (FUSED)	10,000 A RMS SWM	10,000 A RMS SWM	10,000 A RMS SWM

- NOTES:
- FUSHOLDER MAY BE APPLIED AS A LOADBREAK DEVICE IN 3φ APPLICATIONS WHERE THE LINE TO LINE VOLTAGE WILL NOT EXCEED 15 KV
 - NAMEPLATE FOR 1φ APPLICATIONS, DESIGNATED BY BLACK INK ON CAP NAMEPLATE; FOR 3φ APPLICATION, DESIGNATED BY RED INK ON CAP NAMEPLATE.
 - MUST PASS THRU 3.50 DIA HOLE.

CATALOG NO.	PROBE CONTACT	FEMALE CONTACT	DRAWOUT ROD
7559ZB8299	7559ZB3199	7559ZB1199	7559ZB0999
7559ZB8299	7559ZB3199	7559ZB1199	7559ZB5799
7559ZB8399	7559ZB3199	7559ZB1199	7559ZB1099
7559ZB8399	7559ZB3199	7559ZB1199	7559ZB5699
7559ZB8499	7559ZB3299	7559ZB4799	7559ZB4899
7559ZB8499	7559ZB3299	7599ZB4799	7599ZB5899

LOAD BREAK CURRENT-LIMITING FUSE

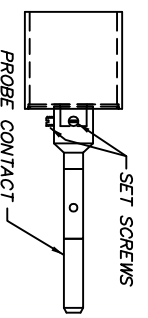
DECAL

LOADBREAK - ATTACH HOT LINE TOOL TO EYEBOLT ON DRAWOUT ASSEMBLY. RAPIDLY WITHDRAW ASSEMBLY FROM FUSEHOLDER HOUSING.

LOADMAKE - WITH HOT LINE TOOL ATTACHED TO EYEBOLT, INSERT DRAWOUT ASSEMBLY INTO FUSEHOLDER HOUSING. TIGHTEN SET SCREWS TO SECURELY CLAMP FUSE. LOADBREAK FUSE IS NOW IN SERVICE.

FUSE CHANGE-OUT - DISASSEMBLE BY LOOSENING 4 SET SCREWS. REPLACE BLOWN FUSE WITH NEW FUSE AND REASSEMBLE WITH PARTS ORIENTED AS PER ABOVE SKETCH.

ADDITIONAL INFORMATION IS AVAILABLE IN PRODUCT INSTRUCTION BOOK
NF 3101X0011990



3φ PROBE CONTACT FOR 7559Z-8499 ONLY

REVISIONS	
0	JUL.28,1987
1	G.DAVIS MAR.08,1988 RETRACED ADDED NEW CAT NO'S
2	G.DAVIS APR.28,1988 CHG DESC B3299 WAS B3199
3	G.DAVIS MAY 31,1988 ADD 3φ PROBE DETAIL
4	L.MCLEAN 12/15/93 CHG TERM LGTH
5	D.KANUPP 3/9/94 ADD 2.661 DIM.
6	STULPIN 04-FEB-99 UPDATED TEMPLATE
7	GILLAND 26-SEPT-06 UPDATED TEMPLATE
8	N. Adams 8/25/06 Correct dimensions
9	N. Adams 9/07/06 ECN B266 Correct dimensions

MADE BY: G.DAVIS JUL.08,1987
ISSUED BY: Nicholas Adams 9/07/06

APPROVALS: ECI

B2571K230
SH 1

B2571K230
SH 2

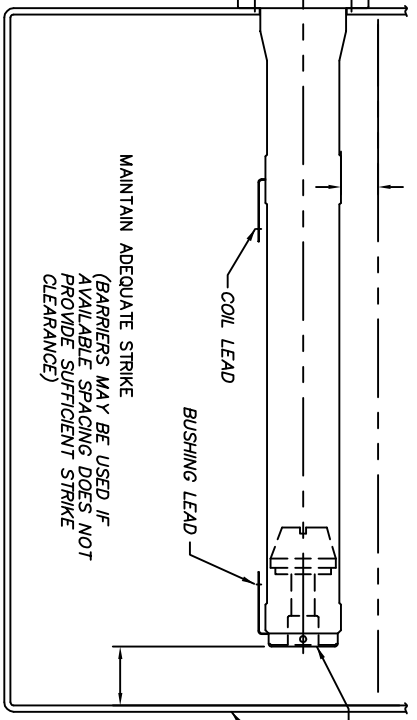
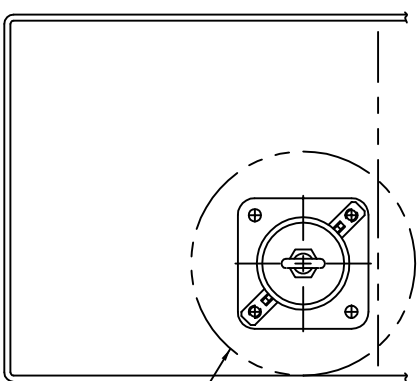
ERMCO COMPONENTS, INC.

TITLE: **OUTLINE (DRY WELL FUSEHOLDER)**

COUNT ON SH: **2**

FIRST MADE FOR: **LOADBREAK METAL FLANGE**

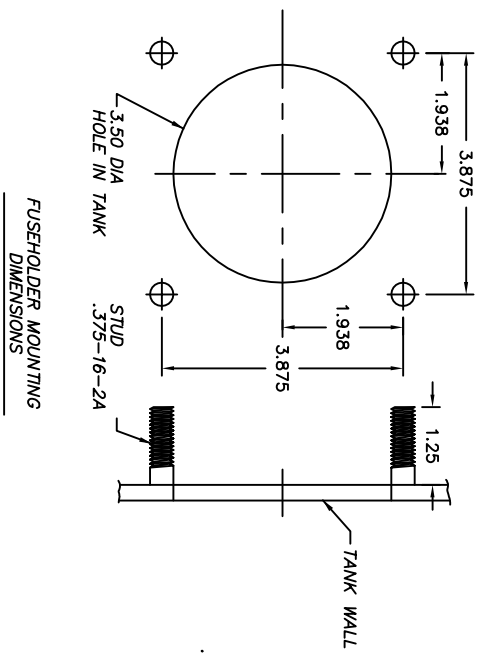
UNLESS OTHERWISE SPECIFIED, TOLERANCES ARE	±	±	±
SURFACES	2 PL DEC	3 PL DEC	ANGLES
✓	±	±	± DEG



1.50 BELOW MIN OIL LEVEL

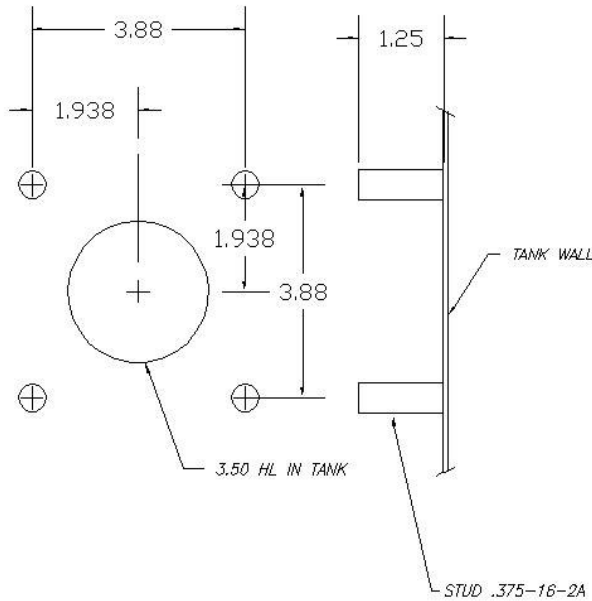
GENERAL FUSEHOLDER APPLICATION

- MOUNTING FUSEHOLDER IN POCKET**
- POCKETS UP TO 1.50 IN DEPTH CAN BE USED WITHOUT ADVERSELY AFFECTING IMPULSE WITHSTAND.
 - IF APPLICATION REQUIRES POCKET DEPTH IN EXCESS OF 1.50, CARE SHOULD BE TAKEN TO AVOID ADVERSELY AFFECTING IMPULSE WITHSTAND.



REVISIONS		APPROVALS	ECI	COUNT ON SH	PRINTS
MADE BY	DATE				
0	JUL. 28, 1987				
1	G.DAVIS MAR. 08, 1988				
RETRACED					
2	STULPIN 04-FEB-99				
UPDATED TEMPLATE					
8	N. Adams 8/25/06				
Correct dimensions on sh. 1					
9	N. Adams 9/07/06 ECN B266				
Correct dimensions					
ISSUED BY Nichols Adams 9/07/06					
MADE BY					
G.DAVIS JUL. 07, 1987					
APPROVALS					
ECI					
COUNT ON SH					
B2571K230					
SH 2					
ERMCO-PMT					

C-10

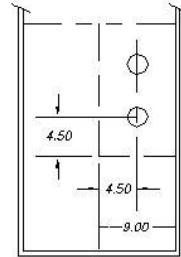
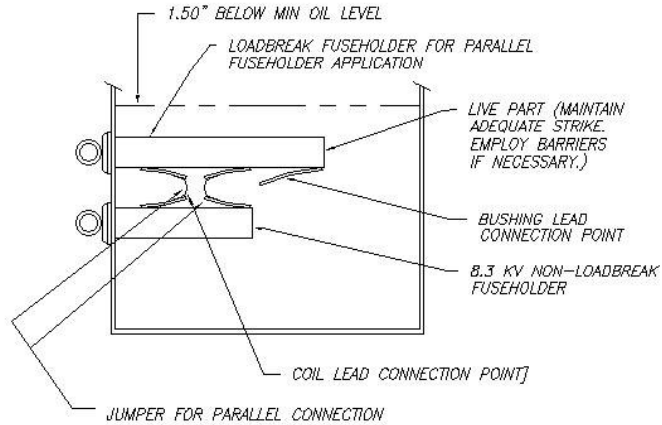


FUSEHOLDER MOUNTING DIMENSIONS

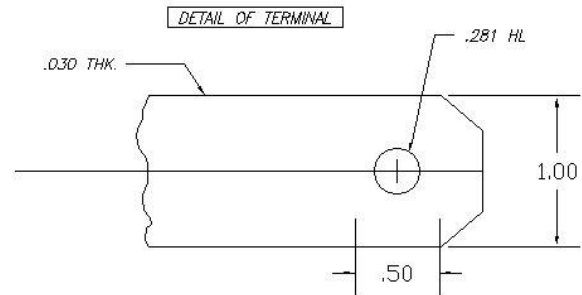
WARNING

WHEN USING THIS SPECIAL LOADBREAK FUSEHOLDER CONNECTED IN PARALLEL WITH A NON-LOADBREAK FUSEHOLDER, THE TRANSFORMER MANUFACTURER MUST PROVIDE A BAFFLE ARRANGEMENT SUCH THAT THE NON-LOADBREAK FUSEHOLDERR CANNOT BE ACCESSED WITHOUT FIRST REMOVING THE DRAWOUT ASSEMBLY FROM THE LOADBREAK FUSEHOLDER, ALSO, THE DRAWOUT ASSEMBLY FROM THE NON- LOADBREAK FUSEHOLDER MUST NOT BE ABLE TO BE INSERTED AFTER THE DRAWOUT ASSEMBLY FOR THE LOADBREAK FUSEHOLDER HAS BEEN INSERTED.

ERMCO COMPONENTS INC.				TITLE	B 2571K174
UNLESS OTHERWISE SPECIFIED, TOLERANCES ARE				CONT ON SH	SH 2
SURFACES	2 PL DEC	3 PL DEC	ANGLES	OUTLINE - LOADBREAK DRY WELL FUSEHOLDER FOR PARALLEL FUSEHOLDER APPLICATION	
✓	±	±	± DEG	FIRST MADE FOR	



AS SHOWN ABOVE, A 4.50\"/>



REVISIONS	1	STULPIN 04-FEB-99																		ERMCO-BTL
			UPDATED TEMPLATE																	PRINTS TO
MADE BY:	S. JAMES 3/8/77										APPROVALS		HICKORY ERMCO		B 2571K174					
ISSUED BY:	S. STULPIN 04-FEB-99														CONT ON SH SH 2					

02/99