

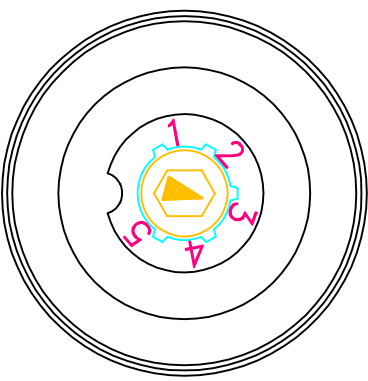
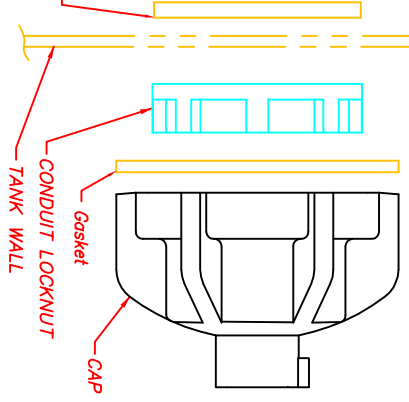
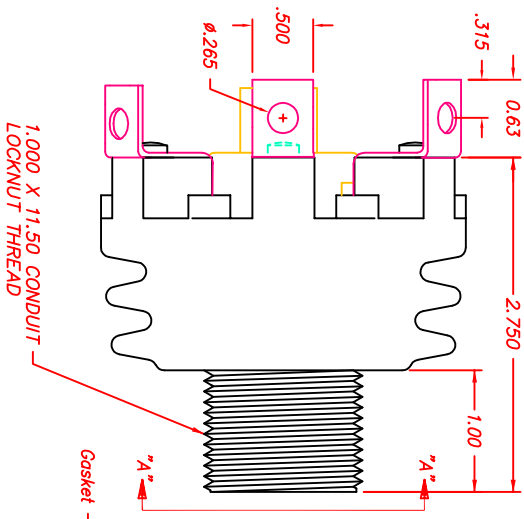
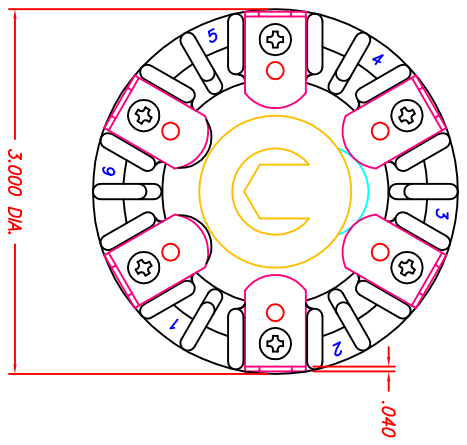


TITLE
OUTLINE (TAP CHANGER)

32B928001
 CONT ON SH 4
 SH 3

UNLESS OTHERWISE SPECIFIED, TOLERANCES ARE
 SURFACES 2 PL DEC 3 PL DEC ANGLES
 ✓ F. F. F. DEG

FIRST MADE FOR
 9F92 - TAPCHANGER



VIEW "A"-"A"
 (SEE NOTE 3)

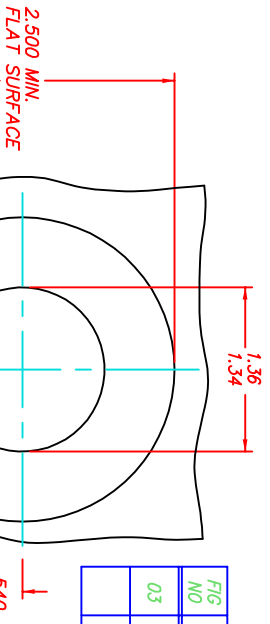


FIG NO	MODEL NO	TERMINATION	MAX AMPS	MAX BIL	CAP
03	9F92ACA007	.265 SPADE HOLE - AXIAL	100	150KV	WITH
	9F92ACA010	.265 SPADE HOLE - AXIAL	100	150KV	W/OUT

- NOTES:
 1. CAUTION DECAL PROVIDED SHOULD BE LOCATED ON TANK ADJACENT TO TAP CHANGER.
 2. TO OPERATE REMOVE CAP, REVERSE, INSERT WITH NIB ON CAP ALIGNED WITH ARROW ON SHAFT, TURN TO NEW POSITION, REMOVE CAP, REVERSE AND REASSEMBLE.
 3. TIGHTEN LOCKNUT TO 175-225 LB-IN.

REVISIONS		APPROVAL	ECI	CONT ON SH	PRINTS TO
1	STULPIN 08-MAR-99 UPDATED TEMPLATE				
2	STULPIN 18-JUN-99 ADDED SHEET 4 ; ECN F508				
3	STULPIN 24-JUL-00 CHGD MAX AMPS FROM 50 TO 100 ECN: NONE				
4	GILLAND 11/06/03 UPDATE MATRIX				
5	N. Adams 10/01/04 Updated Template Border				

MADE BY: S. STULPIN
 ISSUED BY: Nicholas Adams 10/01/04
 APPROVAL: [Signature]
 ECI: [Signature]
 CONT ON SH 4
 32B928001
 SH 3



TITLE

OUTLINE (TAP CHANGER)

CONT. ON SH

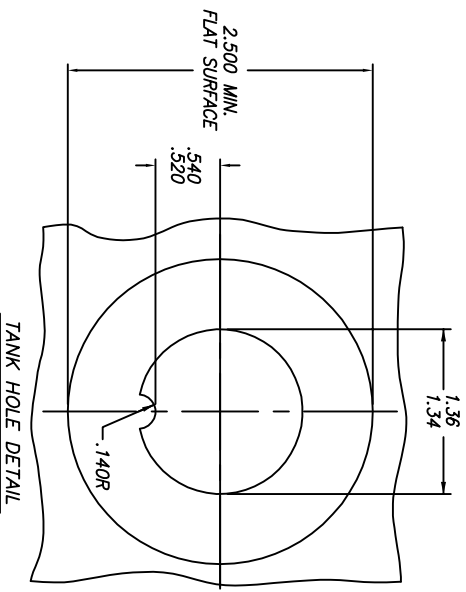
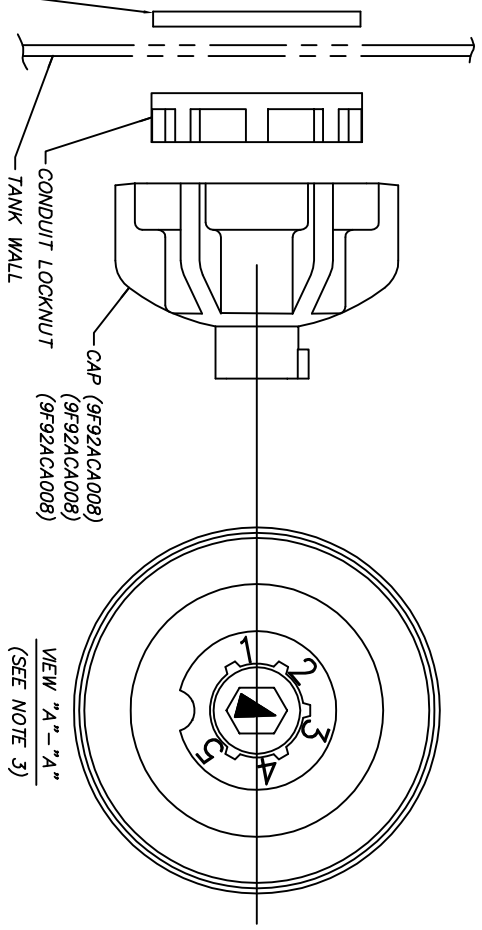
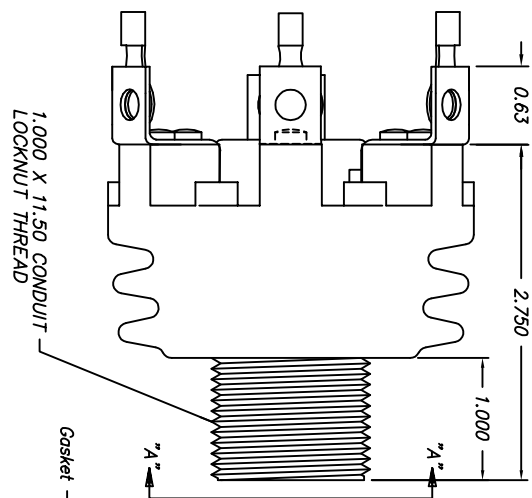
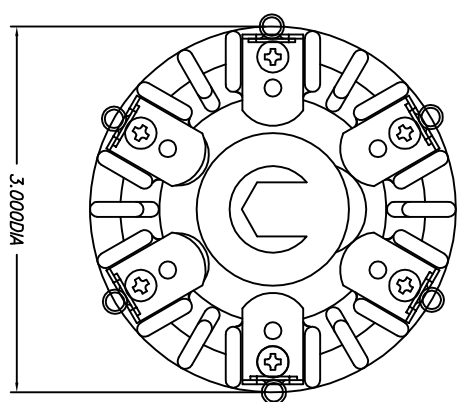
SH 4

UNLESS OTHERWISE SPECIFIED, TOLERANCES ARE SURFACES ± 2 PL DEC ± 3 PL DEC ANGLES ± DEG

FIRST MADE FOR

9F92 - TAPCHANGER

32B928001



- NOTES:
1. CAUTION DECAL PROVIDED SHOULD BE LOCATED ON TANK ADJACENT TO TAP CHANGER.
 2. TO OPERATE REMOVE CAP, REVERSE, INSERT WITH NIB ON CAP ALIGNED WITH ARROW ON SHAFT, TURN TO NEW POSITION, REMOVE CAP, REVERSE AND REASSEMBLE.
 3. TIGHTEN LOCKNUT TO 175-225 LB-IN.

FIG NO	MODEL NO	TERMINATION	MAX AMPS	MAX BILL	CAP
04	9F92ACA008	#12-#10 CRIMP	100	150KV	WITH
04	9F92ACA012	#12-#10 CRIMP	100	150KV	W/OUT
04	9F92ACA011	#16-#14 CRIMP	100	150KV	W/OUT
04	9F92ACA014	#16-#14 CRIMP	100	150KV	WITH
04	9F92ACA013	#8 CRIMP	100	150KV	W/OUT
04	9F92ACA015	#8 CRIMP	100	150KV	WITH

REVISIONS	
1	STULPIN 31-JUL-00 CHG MAX AMPS FROM 50 TO 100 ECN: NONE
2	STULPIN 23-MAR-01 ADDED CAT# 9F92ACA014 ECN: F669
3	GILLAND 26-JUN-01 CHGD TERMINAL LOCATION ECN: F707
4	GILLAND 4-SEPT-01 CHGD TERMINAL LOCATION ECN: F734
5	GILLAND 24-SEPT-01 CHGD TERMINAL LOCATION ECN: F740
6	GILLAND 26-AUG-02 ADD 9F92ACA011 ECN: F852
7	GILLAND 11/06/03 ADD 9F92ACA013 & 9F92ACA015
8	N. Adams 10/01/04 Updated Template Border

MADE BY: S. STULPIN 18-JUN-99
ISSUED BY: Nicholas Adams 10/01/04
APPROVAL: ECI
CONT ON SH: 32B928001
SH 4



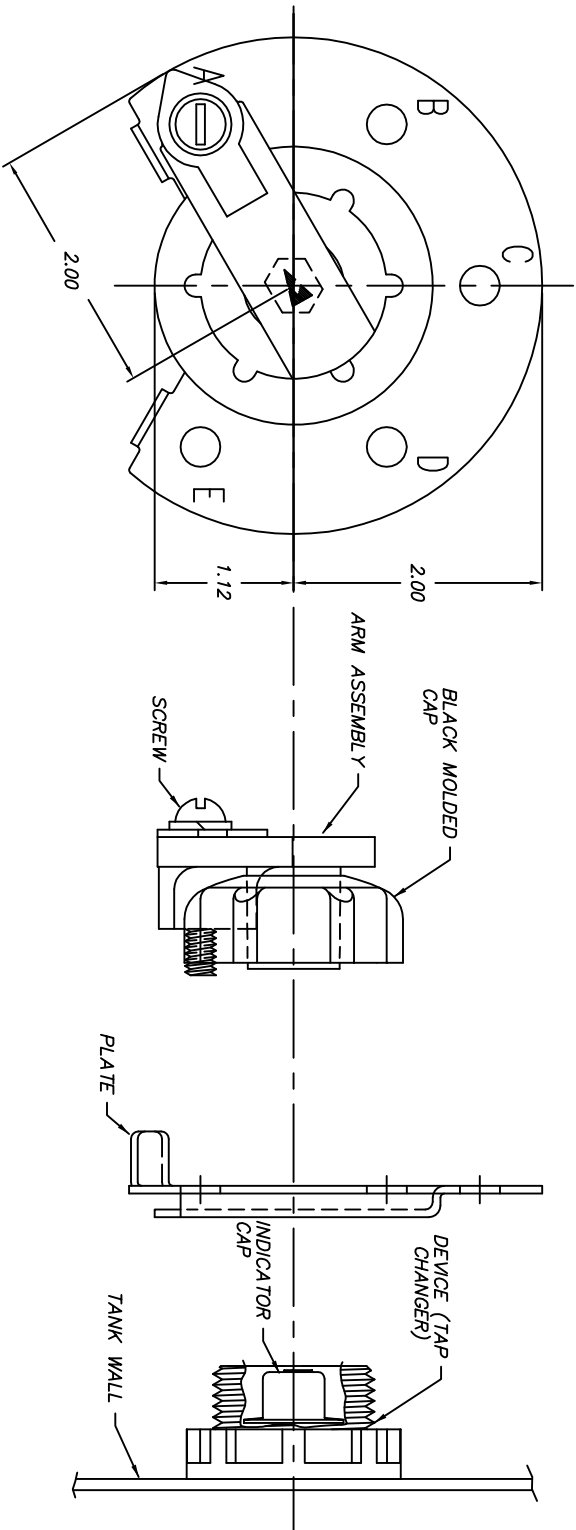
TITLE

OUTLINE

32B928003
SH 3

UNLESS OTHERWISE SPECIFIED, TOLERANCES ARE:
SURFACES ± 2 PL DEC
± ANGLES
± DEG

FIRST MADE FOR 9F92DCW004 (EXT IND ARM KIT)



F03

CAT NO 9F92ACK001

- ASSEMBLY NOTES:
1. REMOVE CAP (IF PRESENT)
CORK GASKET MAY BE LEFT IN PLACE IF CEMENTED TO TANK.
 2. PLACE PLATE OVER END OF DEVICE WITH TAB ORIENTED IN SLOT ON DEVICE.
 3. CHECK DIRECTION OF ARROW ON INDICATOR CAP. PLACE ARM ASSEMBLY OVER CAP ALIGNED WITH ARROW AND PRESS IN PLACE. SCREW BLACK MOLDED CAP UNTIL PLATE IS HELD FIRMLY IN PLACE.
 4. CHECK THAT SCREW WILL ENTER HOLE IN PLATE IN ALL DEVICE POSITIONS. IF NECESSARY ROTATE PLATE TO ORIENT PROPERLY.
 5. PUT DEVICE IN PROPER POSITION AND LOCK IN PLACE WITH SCREW.

- TO OPERATE DEVICE
1. DEENERGIZE TRANSFORMER.
 2. LOOSEN SCREW TO CLEAR PLATE.
 3. TURN DEVICE TO NEW POSITION.
 4. RETIGHTEN SCREW BEFORE REENERGIZING TRANSFORMER.

REVISIONS

0	MAR. 22,1985																		
1	SEPT. 14,1990	RETRACE; W/O CHANGE																	
2	STULPIN 08-MAR-99	UPDATED TEMPLATE																	
3	GILLAND 04-MAR-03	UPDATE CAT #																	
4	N. Adams 10/01/04	Updated Template Border																	

MADE BY: L.SATYER MAR. 20,1985
ISSUED BY: Nicholas Adams 10/01/04

APPROVALS

ECI

32B928003
CONT ON SH
SH 3

ERMICO-BTL
PRINTS TO