

NOTES:
 1. THIS SECTION MUST BE COMPLETELY IMMERSSED UNDER A SUITABLE HEAD OF OIL.
 2. DIMENSIONS IN BRACKETS [XX.X] ARE MILLIMETERS.
 3. REPLACE STUD USING 3/32" HEX ALLEN WRENCH.
 -TORQUE TO 100 IN.LBS. +/- 10 IN.LBS.
 -ORDER REPLACABLE STUD TO MODEL NO. 9U094AW271
 -BACKOUT TORQUE TO 60 IN.LBS. MIN.

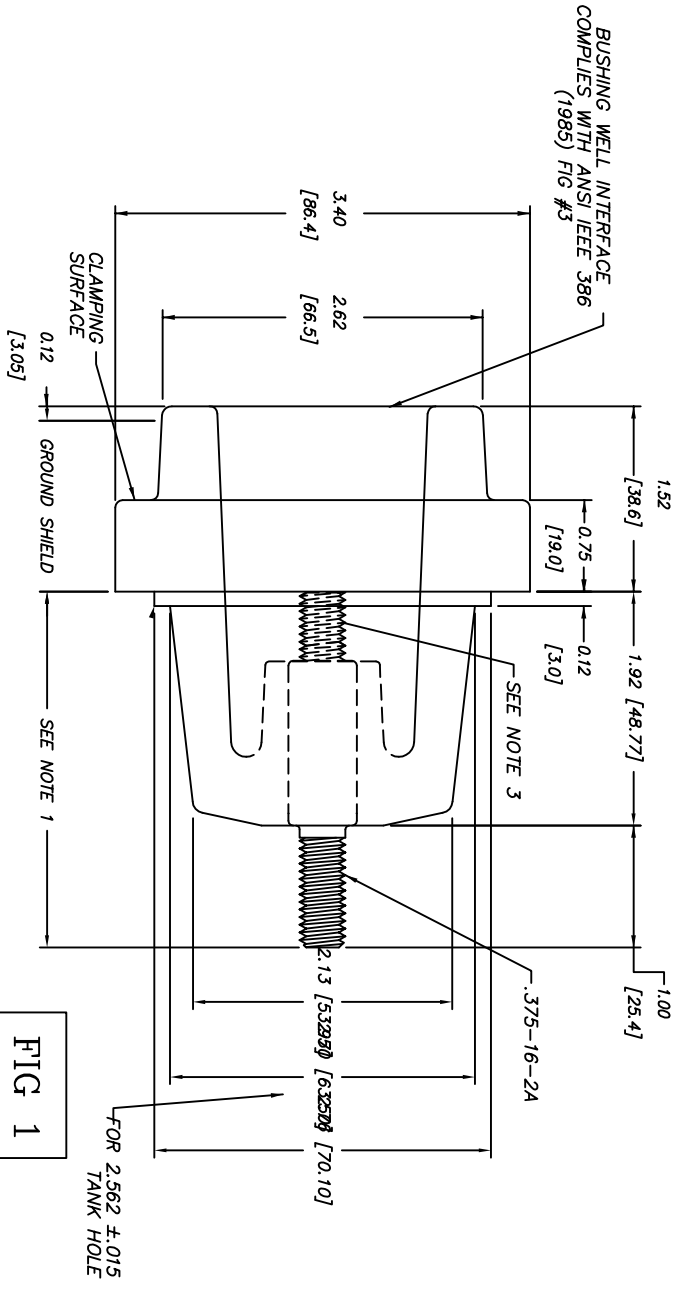
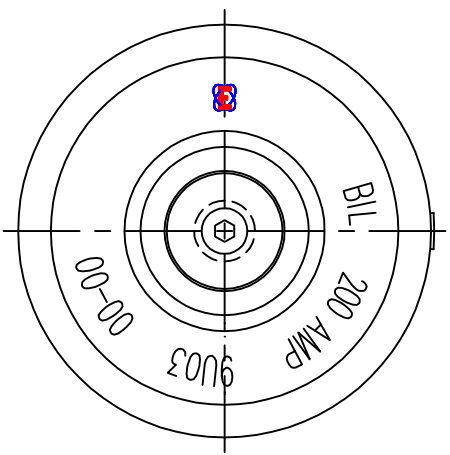


FIG 1

ERMCO COMPONENTS, INC.

TITLE: **OUTLINE (150 BIL BUSH WELL)**

3 2B038007

CONT. ON SH 2

SH 1

UNLESS OTHERWISE SPECIFIED, TOLERANCES ARE:

SURFACES	± 0.01	2 PL. DEG	± 0.005	3 PL. DEG	± 5 DEG
----------	--------	-----------	---------	-----------	---------

FIRST MADE FOR: **FLAT FLANGE DESIGN**

STUD	MODEL NO	VOLTAGE K.V	BIL KV	AMPS	WEIGHT	GASKET FLANGE	FIG # ***
REPLACABLE	9U03BSB001	21.0	150	200	1LB 30Z	WITHOUT GASKET	FIG #1
	9U03BSB002					W/ GASKET & FLANGE	OR
	9U03BGB001					WITHOUT GASKET	
PERMANENT	9U03BGB003					WITH GASKET	FIG #2
	9U03BGB002					W/ GASKET & FLANGE	

*** SEE SHEET 2 FOR FIGURE 2

REVISIONS	
1	G.DAVIS OCT.26,1990
CHG INTERNAL DELIN	
2	G.DAVIS APR.16,1993
ADD FRONT VIEW	
3	ABD 04APR95
CHG NOTE 3	
4	B.BRITTAIN 7/12/95
CHG NOTE 3	
5	B.BRITTAIN 7/28/95
REMOVED HEX, CHG GASKET	
6	K. Carroll 21-Oct-98
Added Fig 2 on Sheet 2 ECN #F436	
7	STULPIN 20-JAN-99
CHG GE LOGO TO ERMCO UPDATED TEMPLATE	
8	STULPIN 04-FEB-99
UPDATED TEMPLATE TO OUTLINE FORMAT	
9	STULPIN 26-JUN-00
REMOVED 125 KVA, MDLS BSB151,153, BCB151, 153	
10	STULPIN 29-SEPT-00
ADDED BSB002 & BCB002 ECN F623	
11	Adams 8/30/04
ADDED BACKOUT TORQUE 60 IN-LB ECN B150	

MADE BY: G.DAVIS OCT. 22, 1990

ISSUED BY: Nicholas Adams 8/30/04

APPROVAL: ECI

3 2B038007

SH 1

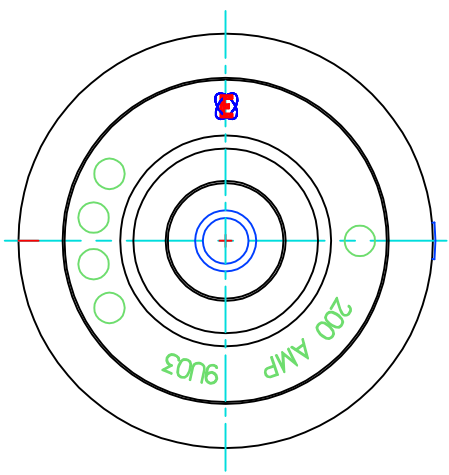
ERMCO COMPONENTS, INC.

UNLESS OTHERWISE SPECIFIED, TOLERANCES ARE:
 SURFACES 2 PL DEC ± 0.01
 ANGLES 3 PL DEC ± 0.005
 FIRST MADE FOR

TITLE: **OUTLINE (150 BIL BUSH WELL)**

32B038007 SH 2

CONT ON SH



NOTES:
 1. This section should be completely immersed under a suitable head of oil.

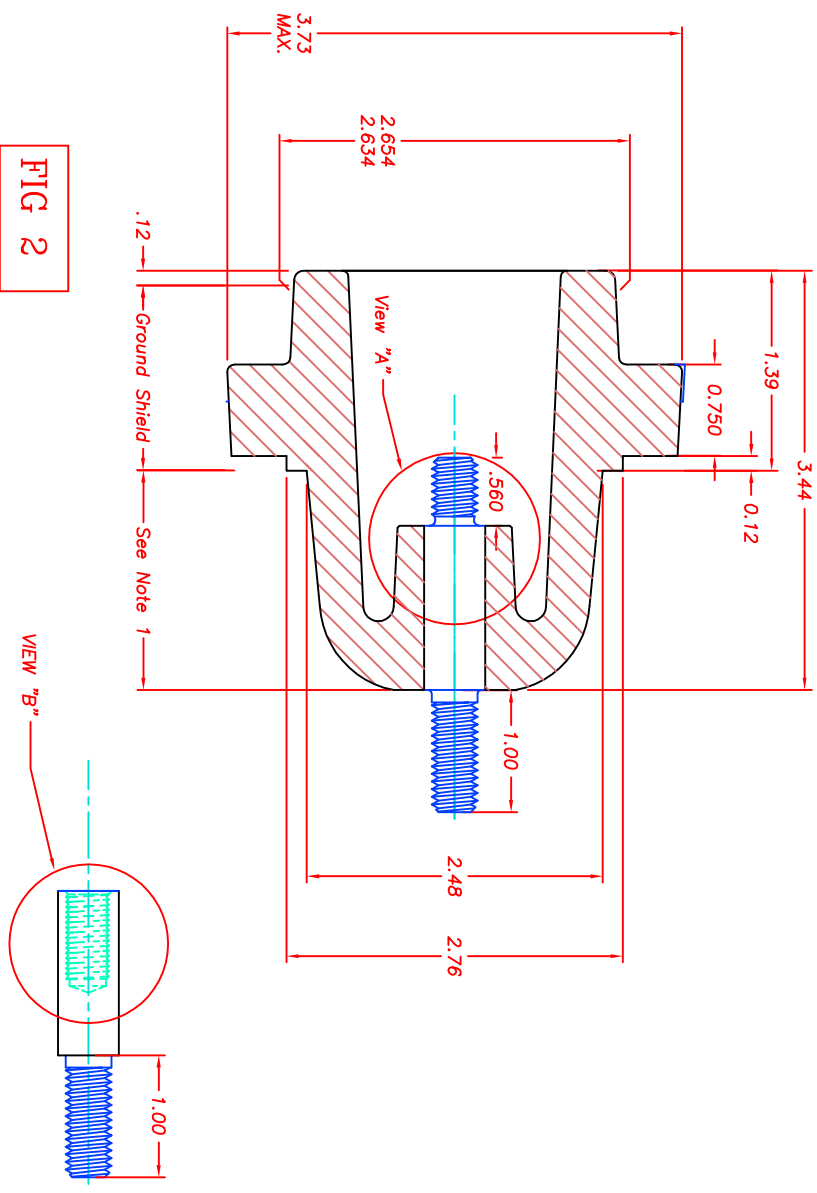


FIG 2

REVISIONS	
1	STULPIN 20-JAN-99 CHG GE LOGO TO ERMCO UPDATED TEMPLATE
2	STULPIN 04-FEB-99 UPDATED TEMPLATE TO OUTLINE FORMAT
3	STULPIN 26-JUN-00 CHG TITLE
11	Adams 8/30/04 Added torque to 60 in. lbs. ECN B150

MADE BY: K. Carroll 21-October-98 ECN #R436	APPROVAL:	ECI	CONT ON SH
ISSUED BY: Nicholas Adams 8/30/04			32B038007 SH 2