

FUSE CHANGE-OUT - DISASSEMBLE BY REMOVING RETAINING SPRING AND LOOSENING 4 SET SCREWS. REPLACE BLOWN FUSE AND REASSEMBLE WITH PARTS ORIENTED AS PER ABOVE SKETCH. REIGHTEN THE 4 SET SCREWS. REGREASE GASKET BEFORE RE-INSTALLING.
ADDITIONAL INFORMATION IS AVAILABLE IN PRODUCT INSTRUCTION BOOK ④

NOTE:

1. MOUNTING HOLE #4.60.
2. FOR THOSE APPLICATIONS WHERE AN INTERLOCK LOADBREAK SWITCH IS NOT USED, IN CONJUNCTION WITH THE NON-LOADBREAK FUSEHOLDER, A WARNING LABEL SHOULD BE USED AS A PRECAUTION AGAINST ENERGISED OPERATION OF THE FUSEHOLDER. THE OPTIONAL WARNING LABEL SHOWN AT RIGHT IS AVAILABLE FROM GENERAL ELECTRIC COMPANY (7559ZC2199)
3. SILICON GREASE SHOULD BE APPLIED TO THE DRAWROD ASSEMBLY GASKET BEFORE INSTALLING IN DRYWELL TUBE.

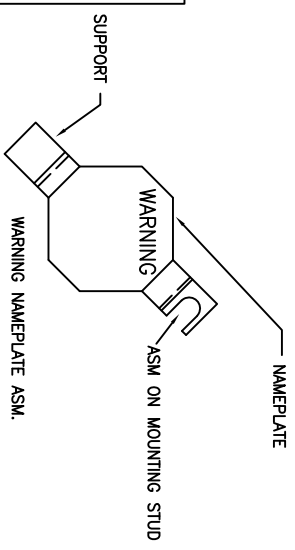


FIGURE 02

ERMCO COMPONENTS, INC.

UNLESS OTHERWISE SPECIFIED, TOLERANCES ARE:
 SURFACES ± 2 PL DEC
 ANGLES ± 3 PL DEC
 FIRST MADE FOR

TITLE: **B2571K189**
 COUNT ON SH 2
 SH 1

OUTLINE (DRY WELL FUSEHOLDER-DIELECTRIC PLUG)

CATALOG NO. 7559ZC2599
 ASSEMBLY DWG NO. B2571K187G02

ENGINEERING DATA	
MAX VOLTAGE RATING	21.1 KV (LN/GND)
MAX VOLTAGE RATING	36.6 KV (LN/LN)
BIL	150 KV
HIPOT	50 KV
CORONA EXTINGUITION	26 KV
CONTINUOUS CURRENT RATING (UNFUSED)	160A
MOMENTARY CURRENT RATING (UNFUSED)	10,000 A RMS SYM(10 CYCLES)
ACCEPTABLE FUSE (G.E. SUREGUARD GP OR MCGRAWHX) (MUST BE ORDERED SEPARATELY)	23 KV ALL SIZES THRU 25A

REPLACEMENT PARTS	CAT NO.
PLUG & CHANNEL ASM. (W/ GASKET)	7559ZB5399
GASKET ONLY	7559ZB5499
PISTON ASM (W/ SPIRAL & RETAINING SPRINGS)	7559ZB5699
CONTACT ASM	7539ZB3999

REVISIONS	
1	S.A. WILSON 23 OCT 95 CHANGED MAX VOLTAGE RATING AS PER ECN # F54
2	STULPIN 04-FEB-99 UPDATED TEMPLATE
3	GILLAND 07-OCT-02 UPDATED TEMPLATE
4	GILLAND 28-OCT-02 UPDATED TEMPLATE
5	Crumley 6/1/04 Correct Assembly NO. ECN # B142
6	N. Adams 3/18/09 Add note 3. Chg sh 2 & 3 to sh. 1 & 2 ECN # B465

MADE BY: B.FRYE 3/9/78
 REISSUED BY: Nicholas Adams 3/18/09

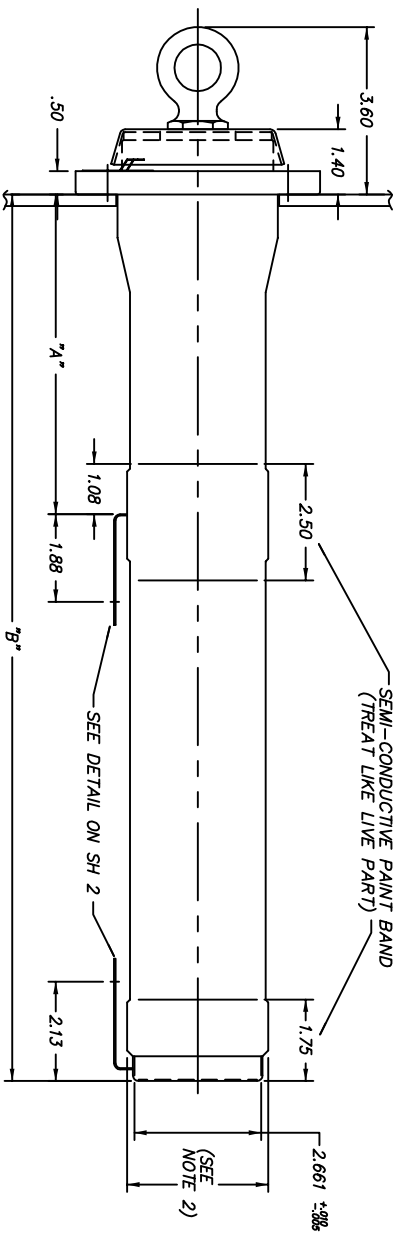
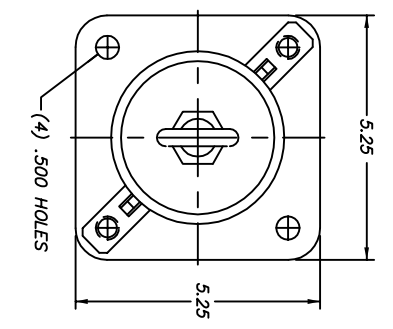
APPROVALS:

ERMCO	B2571K189
COUNT ON SH 2	SH 1



TITLE
B2571K229
 SH 1

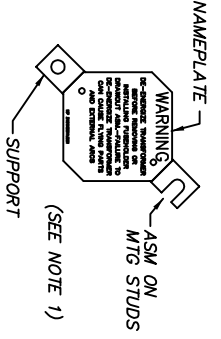
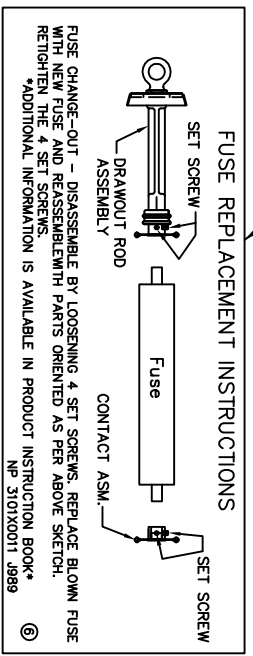
UNLESS OTHERWISE SPECIFIED, TOLERANCES ARE
 SURFACES 2 PL DEC 3 PL DEC ANGLES
 ± ± ± ± DEG
 FIRST MADE FOR NON-LOADBREAK METAL FLANGE



ENGINEERING DATA			CATALOG NUMBER		
FUSEHOLDER CAP	7559ZC8399	7559ZC8499	7559ZC8599		
PLATED STEEL	7559ZC8399	7559ZC8499	7559ZC8599		
STAINLESS STEEL	6.68	6.88	5.58		
"A"	22.84	20.04	14.44		
"B"					
MAX VOLTAGE RATING	21.1kV	15.2kV	8.3kV		
BIL	125kV	125kV	95kV		
HIPOT	50kV	40kV	34kV		
CORONA EXTINCTION	26kV	19kV	11kV		
CONTINUOUS CURRENT RATING (UNFUSED)	160A	160A	160A		
MOMENTARY CURRENT RATING (UNFUSED)	10,000 A RMS SYM (10 CYCLES)	10,000 A RMS SYM (10 CYCLES)	10,000 A RMS SYM (10 CYCLES)		
ACCEPTABLE FUSES (SEE SUREGUARD GP OR MCGRAW HX) (MUST BE ORDERED SEPARATELY)	23kV - ALL SIZES THRU 25A	15.5kV - ALL SIZES THRU 40A	2.8 & 4.3kV - ALL SIZES THRU 100A 5.5kV - ALL SIZES THRU 75A 8.3kV - ALL SIZES THRU 40A		

- NOTES:
 1. FOR THOSE APPLICATIONS WHERE AN INTERLOCKED LOADBREAK SWITCH IS NOT USED IN CONJUNCTION WITH THE NON-LOADBREAK FUSEHOLDER, A WARNING BAFFLE SHOULD BE USED AS A PRECAUTION AGAINST ENERGIZED OPERATION OF THE FUSEHOLDER. THE OPTIONAL WARNING BAFFLE ASSEMBLY SHOWN BELOW IS AVAILABLE FROM ERMCO COMPONENTS INC. (7559ZC2099).
 2. MUST PASS THRU 3.50 DIA HOLE.

CATALOG NO.	CONTACT ASM	DRAWOUT ROD
7559ZC8399	7559ZB3999	7559ZC1199
7559ZC8399	7559ZB3999	7559ZC1199
7559ZC8499	7559ZB3999	7559ZC1199
7559ZC8499	7559ZB3999	7559ZC1199
7559ZC8599	7559ZB3999	7559ZC1199
7559ZC8599	7559ZB3999	7559ZC1199



REVISIONS	
0	JUL.28,1987
1	G.DAVIS MAR.08,1988 RETRACED ADDED NEW CAT NO'S
2	G.DAVIS JULY 30,1991 CHG "A" DIM 6.68 WAS 6.88
3	L.MCLEAN 12/15/93 CHG TERM LGTH
4	D.KANUPP 3/9/94 ADD 2.661 DIM.
5	STULPIN 04-FEB-99 UPDATED TEMPLATE
6	STULPIN 07-MAY-99 CHG C2599 IN CHART TO E4299
7	GILLAND 15-MAY-02 REMOVE ALL REF TO GE REPLAGE WITH ERMCO
8	GILLAND 26-SEPT-02 UPDATED TEMPLATE
9	N.Adams 12/05/05 ECN B220 Instructions Redrawn

ISSUED BY: G.DAVIS JUL.08,1987
 APPROVALS: ECI
 COUNT ON SH 2
B2571K229
 SH 1

FUSE ADAPTER

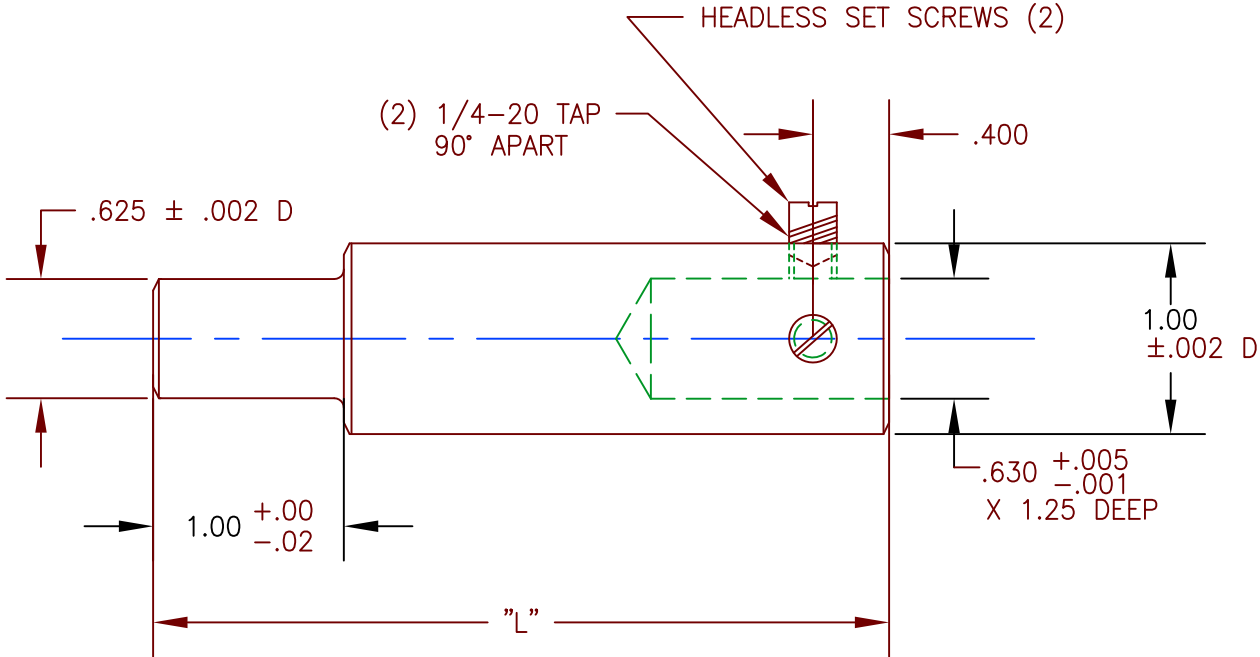
UNLESS OTHERWISE SPECIFIED, TOLERANCES ARE

SURFACES	2 PL DEC	3 PL DEC	ANGLES
✓	±	±	± DEG

FIRST MADE FOR

DRY WELL FUSEHOLDER APPLICATION

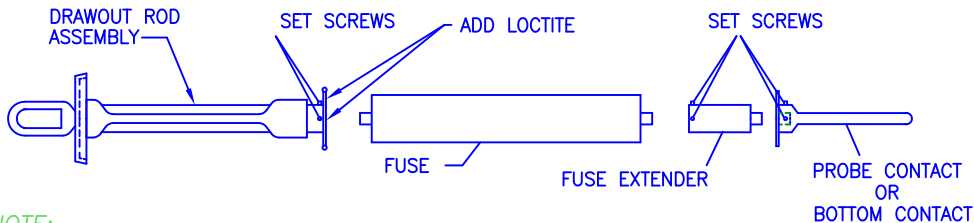
REVISIONS



"L"	CATALOG NO.	FINISH	APPLICATION
8.00	7559ZB6099	NONE	8.3 TO 23 KV
3.68	7559ZB6199		15.2 TO 23 KV
5.18	7559ZB6299		8.3 TO 15.2 KV

ENGINEERING REFERENCE ONLY

CATALOG NO.	DRAWING NO.
7559ZB6099	A9534J018G01
7559ZB6199	A9534J018G02
7559ZB6299	A9534J018G03



NOTE:

- ASSEMBLE FUSE EXTENDER (WHEN REQUIRED) TO BOTTOM OF FUSE AS SHOWN ABOVE.
- A VENT HOLE ON CENTER LINE & PERPENDICULAR TO THE LONG AXIS MAY BE ADDED AT VENDOR'S OPTION.

UPDATED TEMPLATE

Chg. finish to none & add rod dwg asm. & notes 1,2 from 9534J018 ECN B627

STULPIN
04-FEB-99

N. Adams
3/29/11

ERMCO-BTL

PRINTS TO

MADE BY: S.JAMES MAR. 9 1977

APPROVALS

ECI

A2571K179

ISSUED BY: Nicholas Adams 3/29/11

CONT ON SH

SH