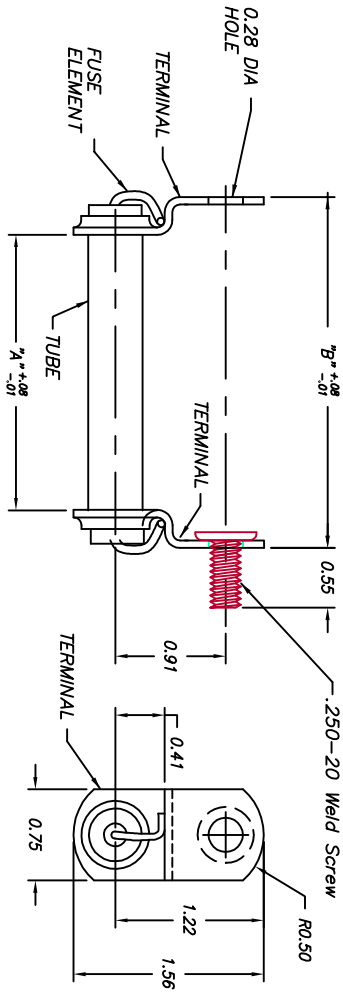


UNLESS OTHERWISE SPECIFIED, TOLERANCES ARE	2 PL. DEC	3 PL. DEC	ANGLES
SURFACES	± 0.01	± 0.005	± .5 DEG

FIRST MADE FOR

9F54 Explosion Fuse

MODEL NUMBER	"A"	"B"	TIME CURRENT CURVE NO.	MAXIMUM DESIGN KV	AMP RATING
9F54DA101	2.25	2.88	A1 SEE NOTE 1	5.2	3
9F54DA201	2.25	2.88	A2 SEE NOTE 1	5.2	4
9F54DA301	2.25	2.88	A3 SEE NOTE 1	5.2	5
9F54DA401	2.25	2.88	A4 SEE NOTE 1	5.2	7
9F54DA501	2.25	2.88	A5 SEE NOTE 1	5.2	9
9F54DA601	2.25	2.88	A6 SEE NOTE 1	5.2	10
9F54DA701	2.25	2.88	A7 SEE NOTE 1	5.2	12
9F54DA801	2.25	2.88	A8 SEE NOTE 1	5.2	15
9F54DA901	2.25	2.88	A9 SEE NOTE 1	5.2	19
9F54DAB001	2.25	2.88	A10 SEE NOTE 1	5.2	24
9F54DAB101	2.25	2.88	A11 SEE NOTE 1	5.2	28
9F54DAB201	2.25	2.88	A12 SEE NOTE 1	5.2	39
9F54DAB301	2.25	2.88	A13 SEE NOTE 1	5.2	45
9F54DAB401	2.25	2.88	A14 SEE NOTE 1	5.2	57
9F54DBA101	3.25	3.88	B1 SEE NOTE 2	8.4	3
9F54DBA201	3.25	3.88	B2 SEE NOTE 2	8.4	4
9F54DBA301	3.25	3.88	B3 SEE NOTE 2	8.4	5
9F54DBA401	3.25	3.88	B4 SEE NOTE 2	8.4	7
9F54DBA501	3.25	3.88	B5 SEE NOTE 2	8.4	9
9F54DBA601	3.25	3.88	B6 SEE NOTE 2	8.4	10
9F54DBA701	3.25	3.88	B7 SEE NOTE 2	8.4	12
9F54DBA801	3.25	3.88	B8 SEE NOTE 2	8.4	15
9F54DBA901	3.25	3.88	B9 SEE NOTE 2	8.4	19
9F54DBB001	3.25	3.88	B10 SEE NOTE 2	8.4	24
9F54DBB101	3.25	3.88	B11 SEE NOTE 2	8.4	28
9F54DBB201	3.25	3.88	B12 SEE NOTE 2	8.4	34
9F54DBB301	3.25	3.88	B13 SEE NOTE 2	8.4	40
9F54DBB401	3.25	3.88	B14 SEE NOTE 2	8.4	48



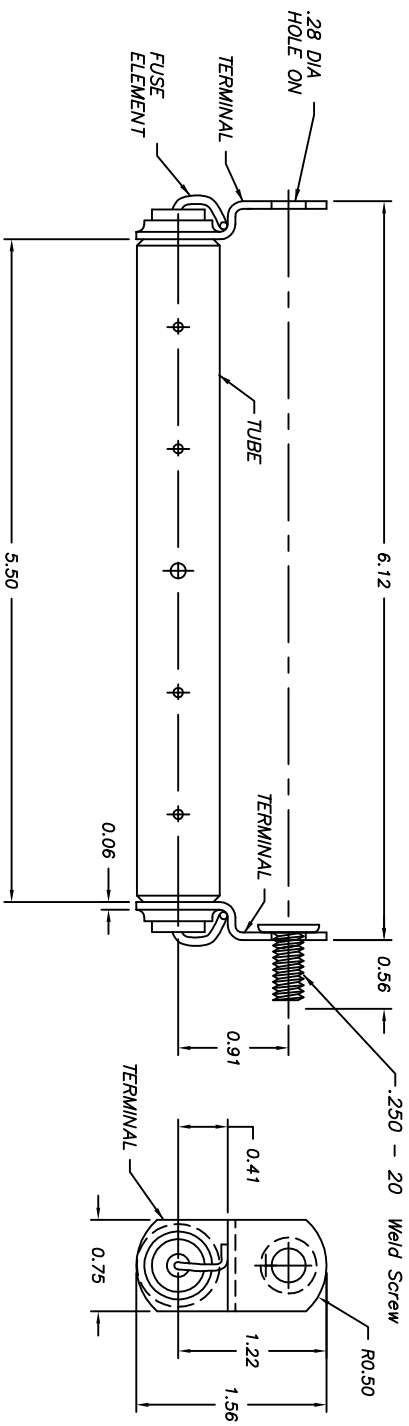
- NOTES:
1. MINIMUM MELTING T.C.C. - GES 8316
MAXIMUM TOTAL CLEARING T.C.C. - GES 8306
 2. MINIMUM MELTING T.C.C. - GES 8317
MAXIMUM TOTAL CLEARING T.C.C. - GES 8307
 3. FOR VERTICAL MOUNTING ONLY.

REVISIONS

0	14-Feb-1980				
1	G.Davis 15-June-89	Retraced; Updated Delin.			
2	A. Downs 17-Mar-95	CHANGED ROUTING			
3	K. Carroll 28-Jan-96	Updated Routing. Retraced onto Outline Template. Updated Terminal Asm per ECN# R80			
4	STULPIN 11-MAR-98	CORRECTED MISSING DIM B & .56 & DEC PLACES TO DIM			
5	STULPIN 03-FEB-99	UPDATED TEMPLATE			
6	STULPIN 20-APR-01	ADDED AMP RATING			
7	GILLAND 11/12/03	ADDED TOLERANCE			

MADE BY: A. MILLIKEN 29-Jan-1980
 ISSUED BY: R. GILLAND 11/12/03
 APPROVAL: HICKORY ERMCO
 32B548085 SH
 PRINTS TO

			TITLE OUTLINE (EXPULSION FUSE)			32B548086 SH 1		
UNLESS OTHERWISE SPECIFIED, TOLERANCES ARE SURFACES ± 0.03 PL DEC ± 0.005 PL DEC ANGLES ± 5 DEG			FIRST MADE FOR 9F54 Expulsion Fuses			CONT ON SH 2 SH 1		



MODEL NUMBER	TIME CURRENT CURVE NO.	MAXIMUM DESIGN KV	AMP RATING
9F54DCA101	C1 SEE NOTE 1	23.0	3
9F54DCA201	C2 SEE NOTE 1	23.0	4
9F54DCA301	C3 SEE NOTE 1	23.0	5
9F54DCA401	C4 SEE NOTE 1	23.0	7
9F54DCA501	C5 SEE NOTE 1	23.0	9
9F54DCA601	C6 SEE NOTE 1	23.0	10
9F54DCA701	C7 SEE NOTE 1	23.0	12
9F54DCA801	C8 SEE NOTE 1	23.0	15
9F54DCA901	C9 SEE NOTE 1	23.0	19
9F54DCB001	C10 SEE NOTE 1	23.0	24
9F54DCB101	C11 SEE NOTE 1	23.0	28

NOTES:
 1. MINIMUM MELTING T.C.C. - GES 8318
 MAXIMUM TOTAL CLEARING T.C.C. - GES 8308
 2. FOR VERTICAL MOUNTING ONLY.

REVISIONS

NO.	DATE	DESCRIPTION	BY	CHK
5	27-June-97	K. Carroll Deleted Dims on weeps holes. Updated Routing ECN # R101 Chg .250 RD-HD SCR Moved Old Dim's to Note Lyr		
6	24-February-98	K. Carroll Chg OA dim from 6.06. Chg 5.44 DIM ECN #R157		
7	04-FEB-99	STULPIN UPDATED TEMPLATE		
8	20-APR-01	STULPIN ADDED AMP RATINGS		

MADE BY: A. Millikan 04-Feb-80	APPROVALS	HICKORY ERMCO	32B548086	PRINTS
ISSUED BY: S. STULPIN 20-APR-01			CONT ON SH 2	SH 1



TITLE

OUTLINE (EXPULSION FUSE)

CONT. ON SH

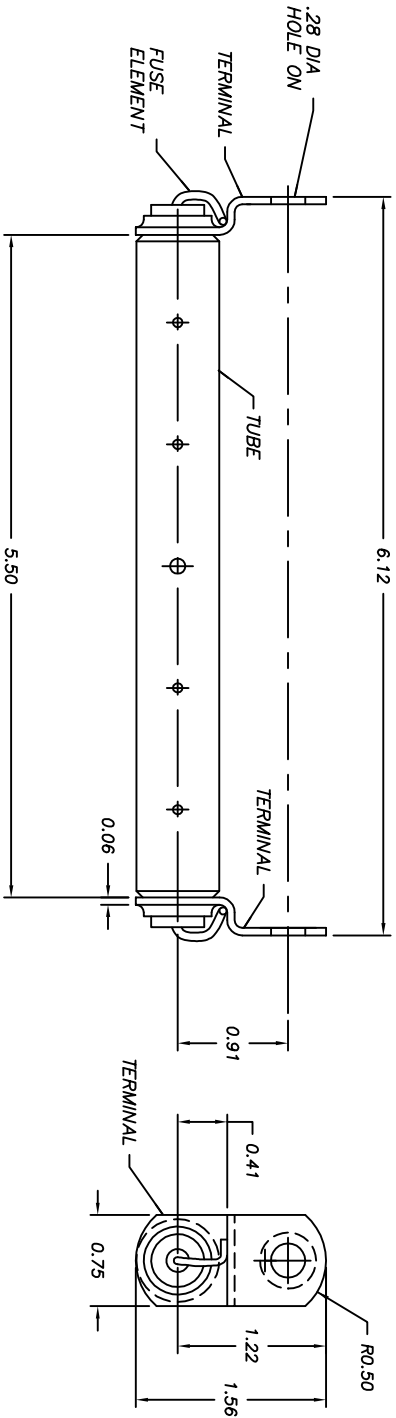
SH 2

32B548086

UNLESS OTHERWISE SPECIFIED, TOLERANCES ARE SURFACES ± 0.03 2 PL DEC ± 0.005 3 PL DEC ANGLES ± 5 DEG

FIRST MADE FOR

9F54 Expulsion Fuses



MODEL NUMBER	TIME CURRENT CURVE NO.	MAXIMUM DESIGN KV	AMP RATING
9F54DCA102	C1 SEE NOTE 1	23.0	3
9F54DCA202	C2 SEE NOTE 1	23.0	4
9F54DCA302	C3 SEE NOTE 1	23.0	5
9F54DCA402	C4 SEE NOTE 1	23.0	7
9F54DCA502	C5 SEE NOTE 1	23.0	9
9F54DCA602	C6 SEE NOTE 1	23.0	10
9F54DCA702	C7 SEE NOTE 1	23.0	12
9F54DCA802	C8 SEE NOTE 1	23.0	15
9F54DCA902	C9 SEE NOTE 1	23.0	19
9F54DCB002	C10 SEE NOTE 1	23.0	24
9F54DCB102	C11 SEE NOTE 1	23.0	28

- NOTES:
 1. MINIMUM MELTING T.C.C. - GES 831B
 2. MAXIMUM TOTAL CLEARING T.C.C. - GES 8308
 3. FOR VERTICAL MOUNTING ONLY.

REVISIONS

2	K. Carroll 27-June-97 Deleted Dims on weeps holes. ECN # R101 Updated Routing Moved Old Dim to Note Lyr
3	K. Carroll 24-Feb-98 Chg OA dim from 6.06 Chg 5.44 DIM ECN#R157
4	STULPIN 04-FEB-99 UPDATED TEMPLATE
5	STULPIN 20-APR-01 ADDED AMP RATINGS

MADE BY: A. Millikan 04-Feb-80
 ISSUED BY: S. STULPIN 20-APR-01

APPROVAL

HICKORY
ERMCO

CONT. ON SH

32B548086
SH 2

32-BTL
PRINTS TO

UNLESS OTHERWISE SPECIFIED

ERMCO COMPONENTS, INC.

DWG NO. 2B548092

SURFACES
✓

TOLERANCES		
2 PL DEC	3 PL DEC	ANGLES
± .03	±	±

THE INFORMATION CONTAINED ON THIS DOCUMENT IS PROPRIETARY TO ERMCO COMPONENTS, INC. AND MAY NOT BE USED FOR ANY OTHER PURPOSES THAN THOSE EXPRESSLY AUTHORIZED BY ECI.

SH 2 NUMBER OF SHS.
TITLE: **OUTLINE (EXPULSION FUSE)**
FIRST MADE FOR:

MODEL NUMBER	TIME CURRENT CURVE NO.	MAXIMUM DESIGN KV	AMP RATING
9F54DDA102	C1 SEE NOTE 1	15	3
9F54DDA202	C2 SEE NOTE 1	15	4
9F54DDA302	C3 SEE NOTE 1	15	5
9F54DDA402	C4 SEE NOTE 1	15	7
9F54DDA502	C5 SEE NOTE 1	15	9
9F54DDA602	C6 SEE NOTE 1	15	10
9F54DDA702	C7 SEE NOTE 1	15	12
9F54DDA802	C8 SEE NOTE 1	15	15
9F54DDA902	C9 SEE NOTE 1	15	19
9F54DDB002	C10 SEE NOTE 1	15	24
9F54DDB102	C11 SEE NOTE 1	15	28

REVISIONS

NO.	DESCRIPTION	DATE
1	Update changes on parts 2A543006P03 & 2A953001P01	10/19/04

B

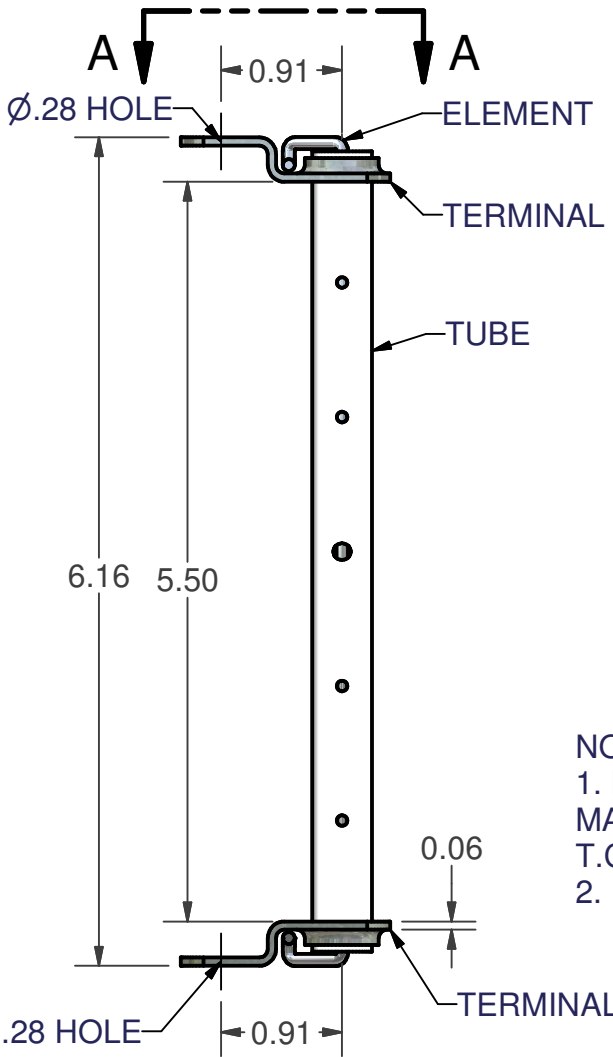
B

A

A

A

A



VIEW A-A

- NOTES:
 1. MINIMUM MELTING T.C.C.-GES 8318
 MAXIMUM TOTAL CLEARING
 T.C.C.-GES 8308.
 2. FOR VERTICAL MOUNTING ONLY.

DRAWN BY: R. GILLAND
ECN: 5/8/2003

APPROVAL

ECI

DWG NO. 2B548092
SH 2 NUMBER OF SHS.
TITLE: **OUTLINE (EXPULSION FUSE)**
FIRST MADE FOR:

ISSUED BY: Nicholas Adams
10/19/2004



TITLE

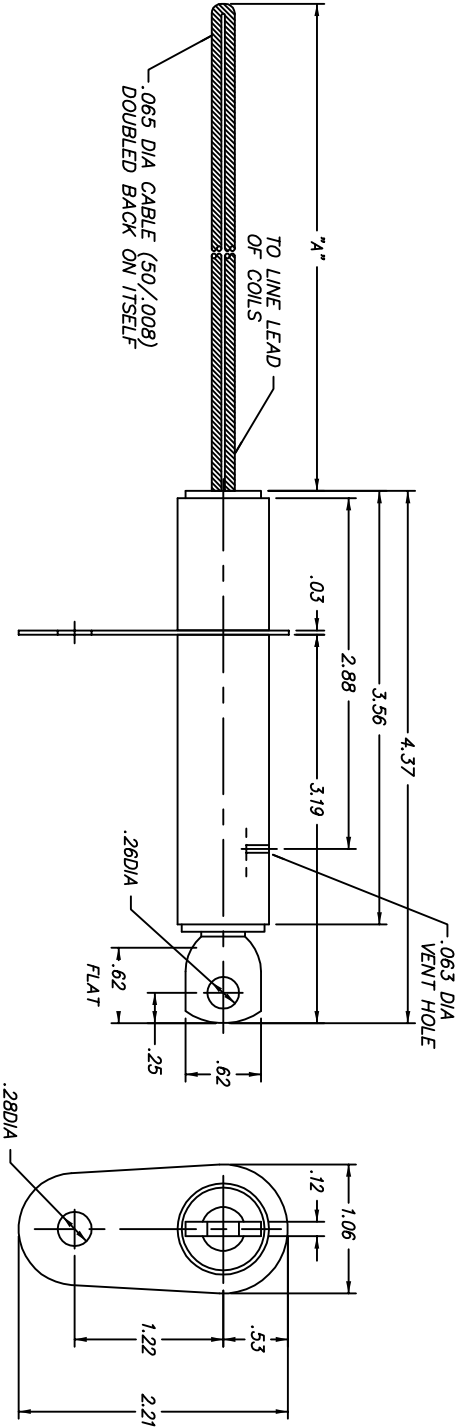
OUTLINE (EXPULSION FUSE)

32B548089
CONT ON SH 2
SH 1

UNLESS OTHERWISE SPECIFIED, TOLERANCES ARE			
SURFACES	± 0.03	2 PL DEC	3 PL DEC
✓	± 0.03	± 0.005	± 5 DEG
ANGLES			

FIRST MADE FOR

9F54 Expulsion Fuses



MODEL NUMBER	*A*	TIME CURRENT CURVE NO.	MAXIMUM DESIGN KV	AMP RATING
9F54WLD002	4.00	30 SEE NOTE 1	15.0	24
9F54WLD102	4.00	31 SEE NOTE 1	15.0	41
9F54WLD202	4.00	32 SEE NOTE 1	15.0	74
9F54WLD303	4.00	33 SEE NOTE 1	15.0	104
9F54WLD302	8.00	33 SEE NOTE 1	15.0	104

- NOTES:
 1. MINIMUM MELTING T.C.C. - GES 8311
 2. MAXIMUM TOTAL CLEARING T.C.C. - GES 8301-A
 3. FUSE MUST BE MOUNTED VERTICAL WITH THE .12 X .62 COPPER TANG UP.

REVISIONS

2	JAN. 20, 1982																		
3	G.DAVIS JUNE 19, 1989	RETRACED; UPDATE DELIN.																	
4	ABD 17MAR95	CHG ROUTING																	
5	STULPIN 04-FEB-99	UPDATED TEMPLATE																	
6	STULPIN 20-APR-01	ADDED AMP RATINGS																	

MADE BY: A.MILLIKAN FEB. 11, 1980
 ISSUED BY: S. STULPIN 20-APR-01

APPROVAL

HICKORY ERMCO

32B548089
CONT ON SH 2
SH 1

REPLACES
3127B54801006



TITLE

OUTLINE (EXPULSION FUSE)

CONT ON SH 2

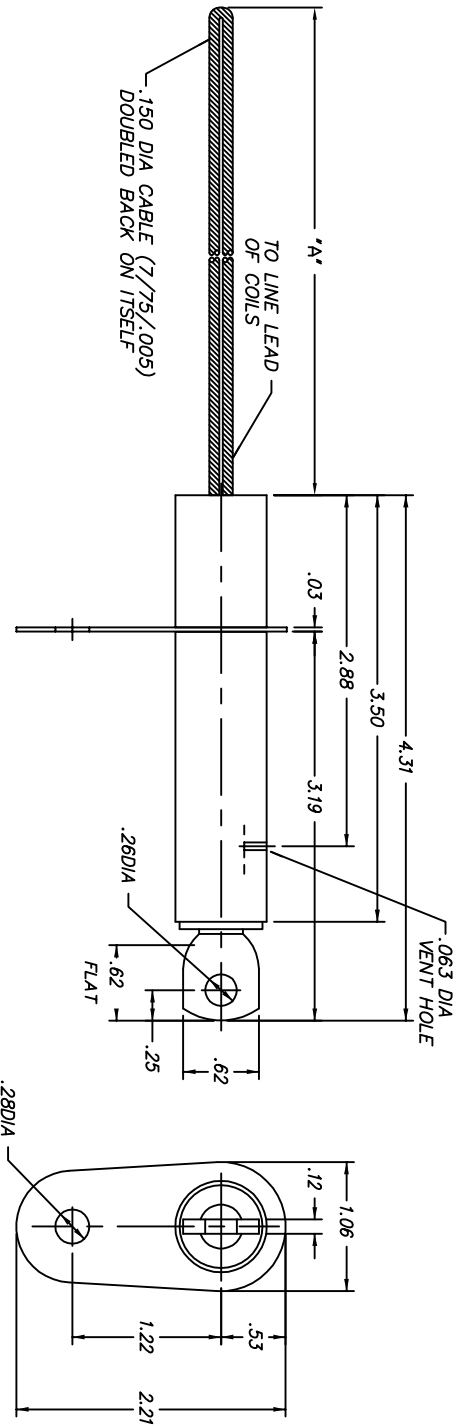
SH 1

32B548090

UNLESS OTHERWISE SPECIFIED, TOLERANCES ARE			
SURFACES	2 PL DEC	3 PL DEC	ANGLES
✓	±	±	± DEG

FIRST MADE FOR

9F54 Expulsion Fuses



MODEL NUMBER	"A"	TIME CURRENT CURVE NO.	MAXIMUM DESIGN KV	AMP RATINGS
9F54WLD402	4.00	34 SEE NOTE 1	15.0	146
9F54WLD502	4.00	35 SEE NOTE 1	15.0	200
9F54WLD602	4.00	36 SEE NOTE 1	15.0	272

NOTES:
 1. MINIMUM MELTING T.C.C. - GES 8311
 2. MAXIMUM TOTAL CLEARING T.C.C. - GES 8301-A
 3. FUSE MUST BE MOUNTED VERTICAL WITH THE .12 X .62 COPPER TANG UP.

REPLACES
 3127B54801007

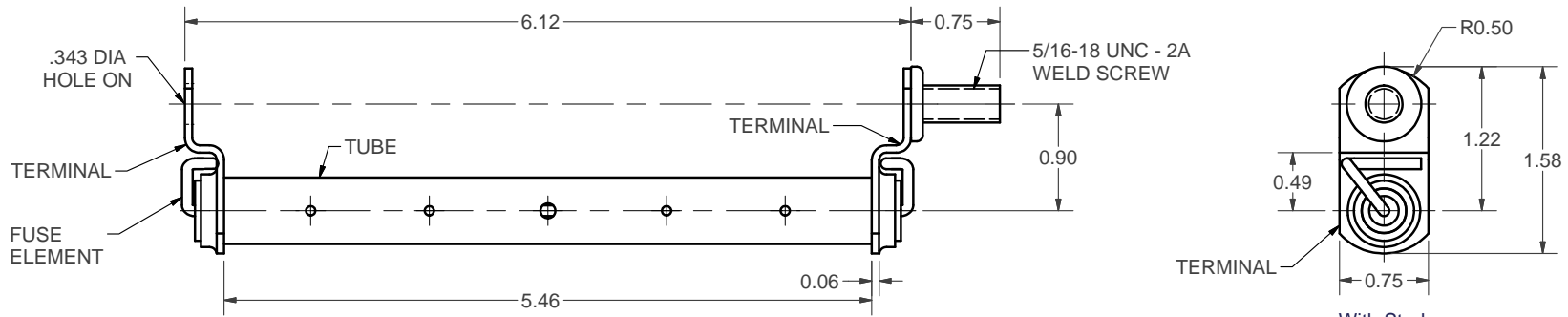
REVISIONS

NO.	DATE	DESCRIPTION	BY	CHK
1	OCT. 24, 1980			
2	G. DAVIS JUNE 19, 1989	RETRACED; UPDATE DELIN.		
4	ABD 17MAR95	CHG ROUTING		
5	STULPIN 04-FEB-99	UPDATED TEMPLATE		
6	STULPIN 21-JAN-01	ADDED COLUMN A & DIM A ECN: NONE		
7	STULPIN 20-APR-01	ADDED AMP RATINGS		

MADE BY: A.MILLIKAN FEB. 11, 1980	APPROVAL	HICKORY ERMCO	32B548090	SH 1
ISSUED BY: S. STULPIN 20-APR-01				

PRINTS TO

UNLESS OTHERWISE SPECIFIED			ERMCO COMPONENTS, INC.		DWG NO. 2B548093
SURFACES ✓	TOLERANCES		THE INFORMATION CONTAINED ON THIS DOCUMENT IS PROPRIETARY TO ERMCO COMPONENTS, INC. AND MAY NOT BE USED FOR ANY OTHER PURPOSES THAN THOSE EXPRESSLY AUTHORIZED BY ECI.		SH 1 NUMBER OF SHS. 1 TITLE: Outline (Expulsion Fuse) FIRST MADE FOR: 9F54 Expulsion Fuses
	2 PL DEC	3 PL DEC			
	± .010	± .005	± 5°		



MODEL NUMBER		TIME CURRENT CURVE NUMBER	MAXIMUM DESIGN KV	AMP RATING	
WITH STUD	WITHOUT STUD				
9F54ECA101	9F54ECA102	C1	SEE NOTE 1	23.0	3
9F54ECA201	9F54ECA202	C2	SEE NOTE 1	23.0	4
9F54ECA301	9F54ECA302	C3	SEE NOTE 1	23.0	5
9F54ECA401	9F54ECA402	C4	SEE NOTE 1	23.0	7
9F54ECA501	9F54ECA502	C5	SEE NOTE 1	23.0	9
9F54ECA601	9F54ECA602	C6	SEE NOTE 1	23.0	10
9F54ECA701	9F54ECA702	C7	SEE NOTE 1	23.0	12
9F54ECA801	9F54ECA802	C8	SEE NOTE 1	23.0	15
9F54ECA901	9F54ECA902	C9	SEE NOTE 1	23.0	19
9F54ECB001	9F54ECB002	C10	SEE NOTE 1	23.0	24
9F54ECB101	9F54ECB102	C11	SEE NOTE 1	23.0	28

NOTES:
 1. MINIMUM MELTING T.C.C. - GES 8318
 MAXIMUM TOTAL CLEARING T.C.C. - GES 8308
 2. FOR VERTICAL MOUNTING ONLY.

REVISIONS	
1	Added without stud ECN B648
	N. Adams 6/10/11
	PRINTS TO ECI-BTL

DRAWN BY: Nicholas Adams	ECN B591 1/11/2011	APPROVAL ECI	DWG NO. 2B548093
ISSUED BY: Nicholas Adams	6/10/2011		SH 1 NUMBER OF SHS. 1 TITLE: Outline (Expulsion Fuse)

REV. 1
B
B-23
A
6/11

4 3 2 1

4 3 2 1

