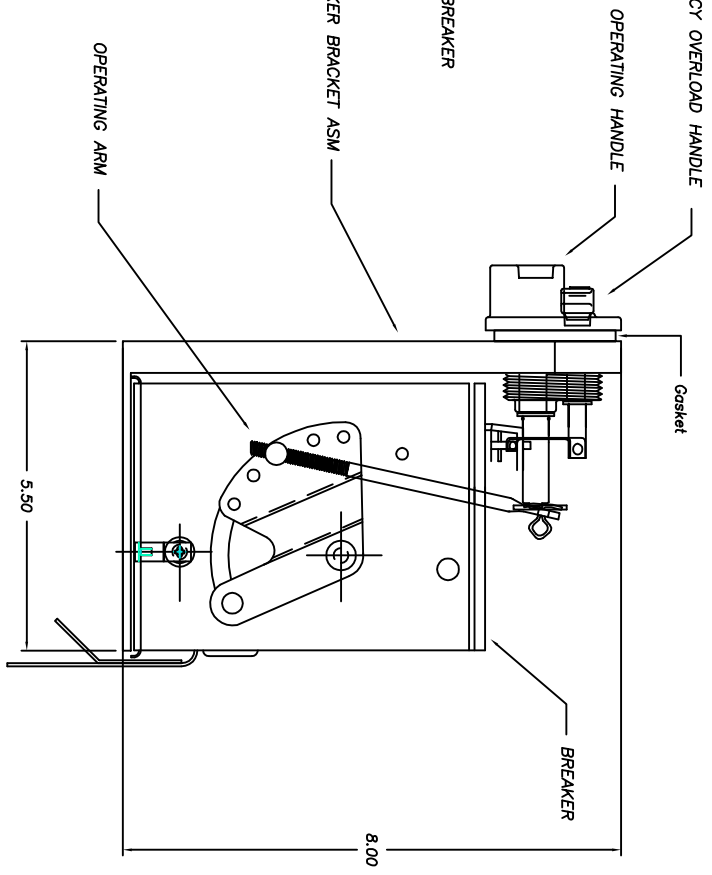
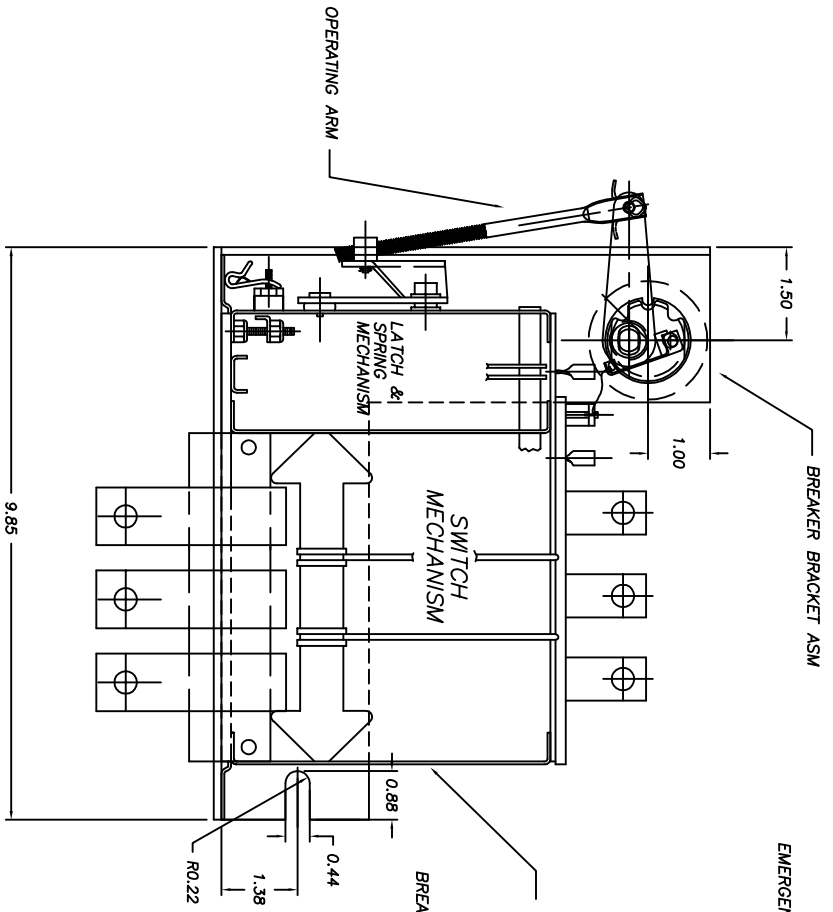


FOR MOUNTING ON FLAT SURFACE



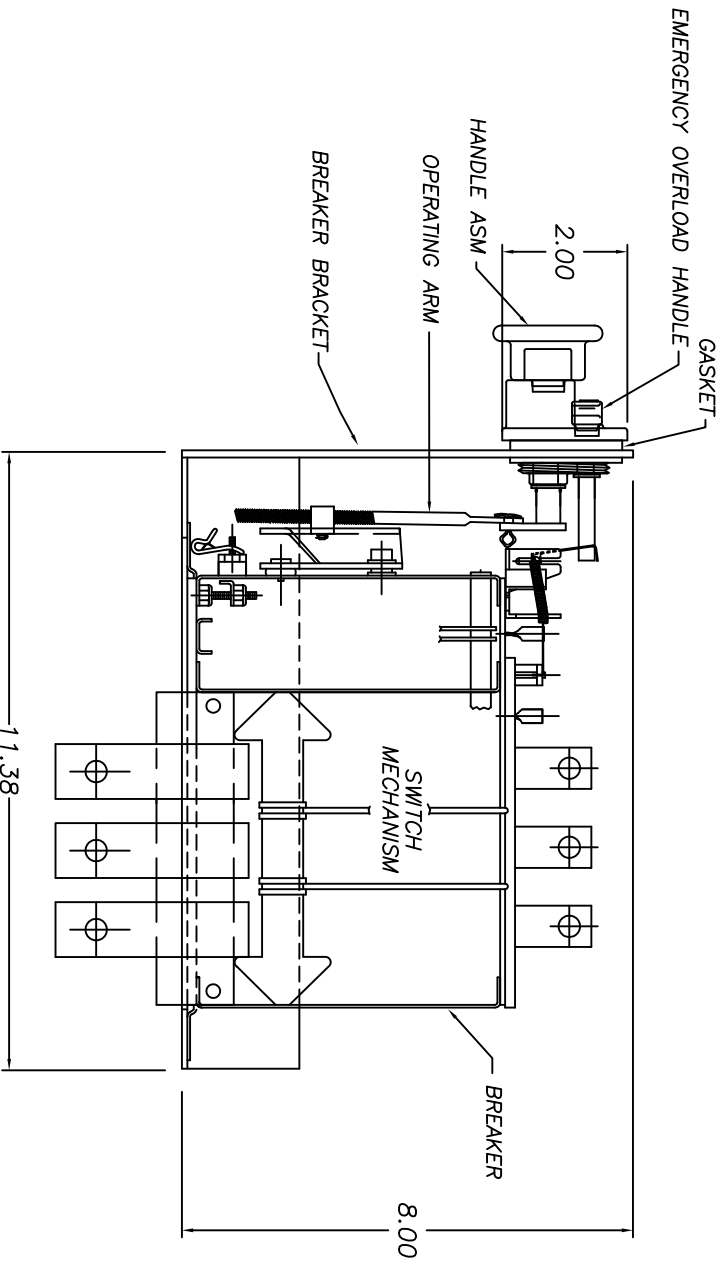
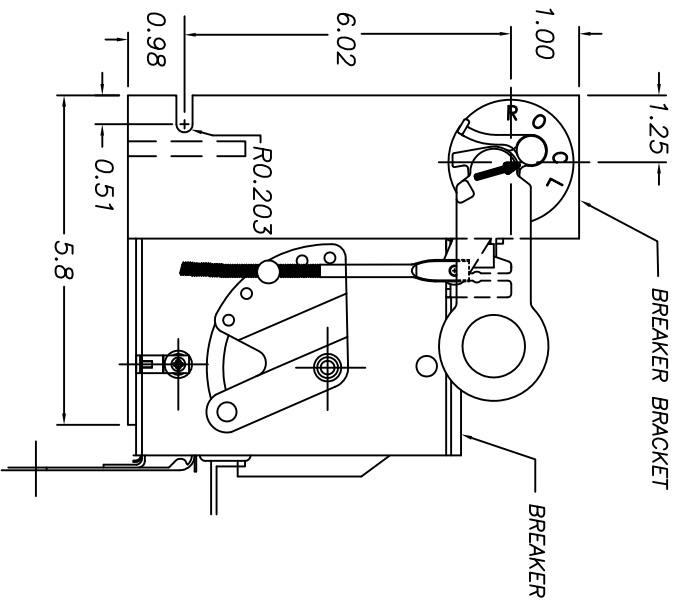
F01

		TITLE OUTLINE (BREAKER W/ BRACKET)	
UNLESS OTHERWISE SPECIFIED, TOLERANCES ARE: SURFACES 2 PL DEC ANGLES ✓ ± 0.005 ± 0.005 ± 0.005 ± 0.005		32B138000 CONT ON SH 2 SH 1	
FIRST MADE FOR T13114 & T15 BKR W/BRACKET		32B138000 SH 1	

REVISIONS	
1	K. Carroll 06-Aug-98 Added dims per ECN #F395
2	K. Carroll 17-Nov-98 Chg Del. of Bracket
3	STULPIN 04-FEB-99 UPDATED TEMPLATE
4	GILLAND 18-APRIL-02 ADD GRD CLIP ECN #F810
5	GILLAND 15-OCT-02 UPDATE TEMPLATE ADD SH 2
6	N. Adams 8/07/06 Remove light from ZQ3399 on Sh 2 ECN F1003
14	N. Adams 9/29/06 Changed to 1Phase ECN B296

MADE BY: K. Carroll 30-March-98 ECN#F331 ISSUED BY: Nicholas Adams 9/29/06	APPROVALS	ECI	32B138000 CONT ON SH 2	ERMCO-BTL PRINTS TO
---	-----------	-----	---------------------------	------------------------

FOR MOUNTING ON CURVED SURFACE



F01

UNLESS OTHERWISE SPECIFIED		TERMO COMPONENTS, INC		32B138001	
SURFACES		TOLERANCES		SH 1	
✓	2 PL DEC ±	3 PL DEC ±	ANGLES ±	CONT ON SH 2	
			DEG	OUTLINE (BREAKER W/BACKET)	
				SH 1 FIRST MADE FOR QPO T13, T14 & T15 BKR W/BACKET (ROUND TANK)	

REVISIONS		APPROVAL		PRINTS	
4	GILLAND ECN F843 1-AUG-02 UPDATE TEMPLATE	S. STULPIN Nicholas Adams 01/28/10	ECL	32B138001	SH 1
5	GILLAND 15-OCT-02 UPDATE TEMPLATE ADD SH 2				
10	N. Adams 8/07/06 Remove light from ZQ3399 on Sh 2 ECN F1003				
11	N. Adams 9/29/06 Changed to 1Phase ECN B296				
12	N. Adams 8/20/09 Add 7561ZQ2499, 4599, 4799 ECN B491				
13	N. Adams 01/28/10 Update dim. on sh. 1 ECN B525				
ECL-BTL					
PRINTS TO					
TO					
SH 1					

