

REV 2

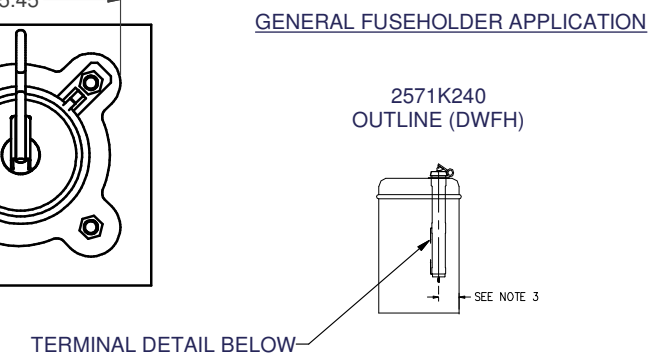
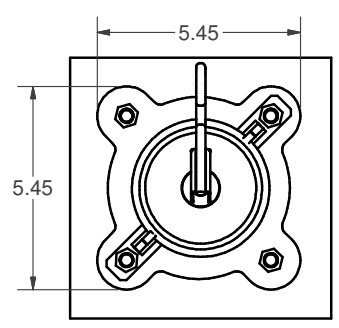
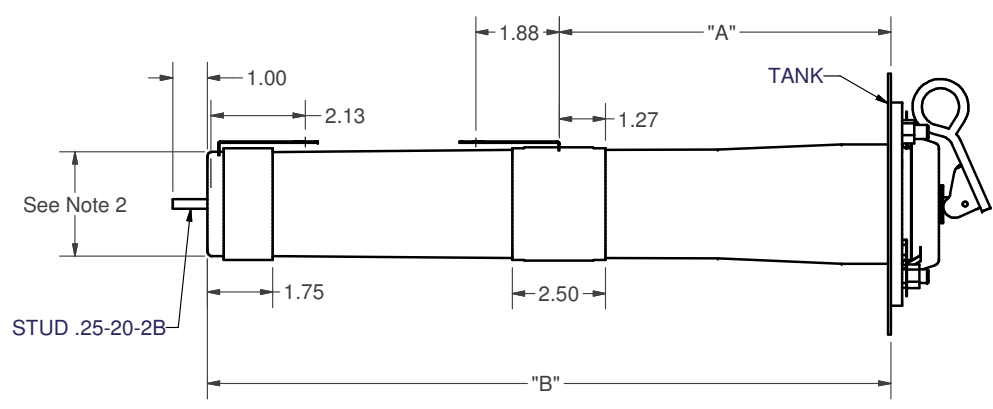
B

C-8

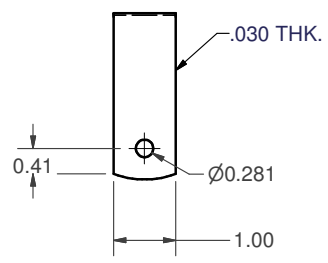
A

4/08

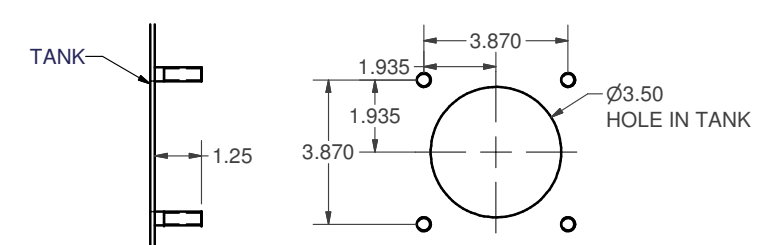
UNLESS OTHERWISE SPECIFIED			ERMCO COMPONENTS, INC.		DWG NO. 2571K240P00
SURFACES			TOLERANCES		SH NUMBER OF SHS.
✓	±	±	±		TITLE: Submersible Dry Well Fuseholder
	2 PL DEC	3 PL DEC	ANGLES		FIRST MADE FOR: DWFH
THE INFORMATION CONTAINED ON THIS DOCUMENT IS PROPRIETARY TO ERMCO COMPONENTS, INC. AND MAY NOT BE USED FOR ANY OTHER PURPOSES THAN THOSE EXPRESSLY AUTHORIZED BY ECI.					



ENGINEERING DATA				
CATALOG NO.	7509ZE0399	7509ZE0299	7509ZE0199	WITHOUT STUD
ALL FLANGES STAINLESS STEEL	7509ZE3399	7509ZE3299	7509ZE3199	WITH STUD
"A"	8.91	8.91	8.91	
"B"	25.53	22.57	18.27	
MAX VOLTAGE RATING	21.1KV	15.2KV	8.3KV	
BIL	125 KV	125 KV	95KV	
HIPOT	50 KV	40 KV	34 KV	
CORONA EXTINCTION	26 KV	19 KV	11 KV	
CONTINUOUS CURRENT RATING (UNFUSED)	160 A	160 A	160 A	
MOMENTARY CURRENT RATING (UNFUSED)	10,000 A RMS SYM (10 CYCLES)	10,000 A RMS SYM (10 CYCLES)	10,000 A RMS SYM (10 CYCLES)	
MCGRAW NX (MUST BE ORDERED SEPERATELY)	23 KV - ALL SIZES THRU 25A	15 KV - ALL SIZES THRU 40A	THRU 100A 5.5 KV - ALL SIZES THRU 75A 8.3 KV - ALL SIZES THRU 40A	

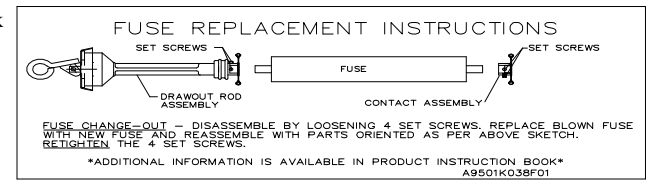


DETAIL OF TERMINAL



FUSEHOLDER MOUNTING DIMENSIONS

- NOTES:
- FOR THOSE APPLICATIONS WHERE AN INTERLOCKED LOAD BREAK SWITCH IS NOT USED IN CONJUNCTION WITH THE NON-LOADBREAK FUSEHOLDER, A WARNING BAFFLE SHOULD BE USED AS A PRECAUTION AGAINST ENERGIZED OPERATION OF THE FUSEHOLDER.
 - REQUIRES A 3.50 DIA HOLE.
 - MAINTAIN A 4.5 RADIAL CLEARANCE FROM CENTERLINE OF FUSEHOLDER AND SIDES OF TANK.
 - MAINTAIN ADEQUATE STRIKE (BARRIERS MAY BE USED IF AVAILABLE SPACING DOES NOT PROVIDE SUFFICIENT STRIKE CLEARANCE) FROM LIVE TUBE CAP AND TANK.



DRAWN BY: Bob Gilland	ECN 10/31/2003	APPROVAL	ECI	DWG NO. 2571K240P00
ISSUED BY: Nicholas Adams	4/7/2008			SH NUMBER OF SHS.
				FIRST MADE FOR:

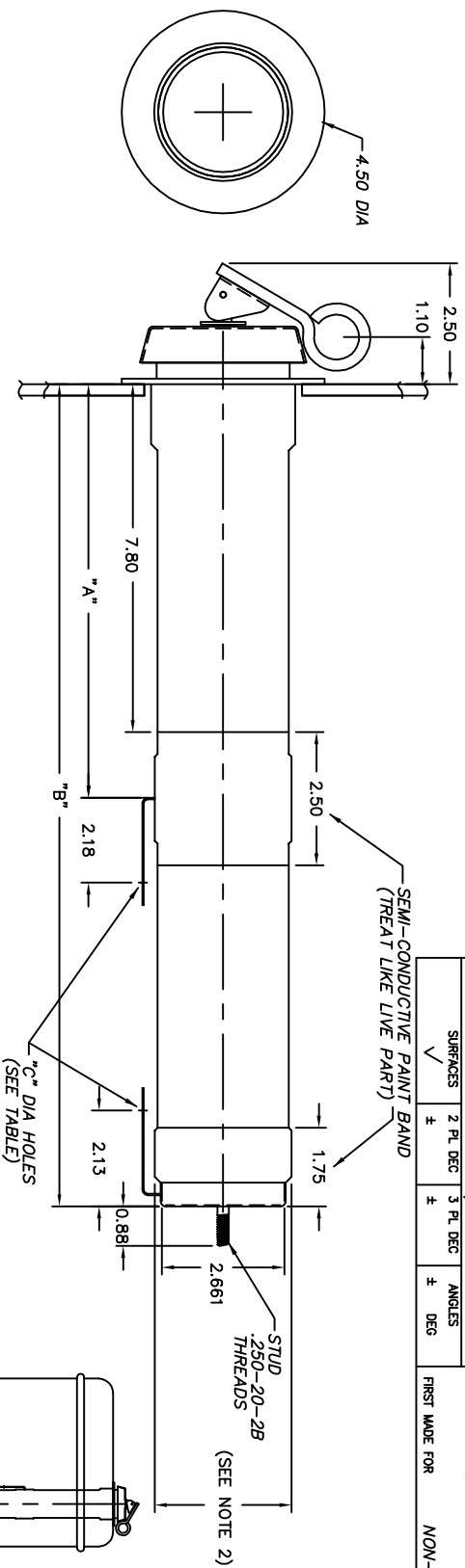
REVISIONS	
1	Nicholas Adams Added outline 8/26/04
2	N. Adams Updated with new flange ECN B392 4/7/08

PRINTS TO ECI-BTL



UNLESS OTHERWISE SPECIFIED, TOLERANCES ARE SURFACES ± 2 PL DEC ANGLES ± 1 DEG

TITLE
B2571K220
 COUNT ON SH 2
 SH 1
 OUTLINE (SUBMERSIBLE DRYWELL FUSEHOLDER)
 FIRST MADE FOR NON-LOADBREAK STN STEEL FLANGE



GENERAL FUSEHOLDER APPLICATION

TERMINALS (DETAILS BELOW)
 MAINTAIN 4.5" RADIAL CLEARANCE (MIN) FROM CENTERLINE OF FUSEHOLDER TO INSIDE OF TANK WALL (OR OTHER GROUND PLANE)

ENGINEERING DATA					
CAT NO W/O STUD	7559ZE1399	7559ZE1299	7559ZE1199	7559ZE1099	7559ZE1499
CAT NO WITH STUD	7559ZE2399	7559ZE2299	7559ZE2199		
"A"	8.91	8.91	8.91	8.91	8.91
"B"	25.53	22.57	18.27	18.27	22.57
"C" DIA HOLES	.281 DIA	.281 DIA	.281 DIA	.406 DIA	.406 DIA
MAX VOLTAGE RATING	21.1KV	15.2KV	8.3KV	8.3KV	15.2KV
BIL	125KV	125KV	95KV	95KV	125KV
HIPOT	50KV	40KV	34KV	34KV	40KV
CORONA EXTINCTION	26KV	19KV	11KV	11KV	19KV
CONTINUOUS CURRENT RATING (UNFUSED)	160A	160A	160A	160A	160A
MOMENTARY CURRENT RATING (UNFUSED)	10,000 A RMS SIM (10 CYCLES)	10,000 A RMS SIM (10 CYCLES)	10,000 A RMS SIM (10 CYCLES)	10,000 A RMS SIM (10 CYCLES)	10,000 A RMS SIM (10 CYCLES)
ACCEPTABLE FUSES (SEE SUREGUARD GP OR MCGRAW HX) (MUST BE ORDERED SEPARATELY)	23KV - ALL SIZES THRU 25A	15.9KV - ALL SIZES THRU 40A	2.8 & 4.3KV - ALL SIZES THRU 100A 5.5KV - ALL SIZES THRU 75A 8.3KV - ALL SIZES THRU 40A	2.8 & 4.3KV - ALL SIZES THRU 100A 5.5KV - ALL SIZES THRU 75A 8.3KV - ALL SIZES THRU 40A	15.9KV - ALL SIZES THRU 40A

REVISIONS

1	G.DAVIS MAR.07,1988	RETRACED, ADDED STUD & NEW MDL #'S
2	G.DAVIS MAR.31,1992	ADD 7559ZE1099 CAT # AND "C" DIA TAB.
3	G.DAVIS JUNE 02,1992	ADD 7559ZE1499 CAT #
4	L.MCLEAN 12/15/93	CHG TERM LGTH
5	D.KANUPP 3/9/94	ADD 2.661 DIM.
6	STULPIN 04-FEB-99	UPDATED TEMPLATE
7	GILLAND 9/2/03	ADD REPLACEMENT STICKER
8	N. Adams 8/25/06	Correct dimensions
9	N. Adams 9/01/06	Correct dimensions
10	N. Adams 7/06/07	Create sh. 2 ECN 8340

NOTES:
 1. FOR THOSE APPLICATIONS WHERE AN INTERLOCKED LOADBREAK SWITCH IS NOT USED IN CONJUNCTION WITH A NON-LOADBREAK FUSEHOLDER, A WARNING BAFFLE SHOULD BE USED AS A PRECAUTION AGAINST ENERGIZED OPERATION OF THE FUSEHOLDER.
 2. REQUIRES A 3.50 DIA HOLE
 3. USE ADEQUATE HEAT SINKS WHEN WELDING.

REPLACEMENT PARTS CONTACT ASSEMBLY DRAWING ROD ASSEMBLY

CAT. NO.
 7559ZB3999
 7559ZE4099

MADE BY B.HUNT MAR.02,1987
 ISSUED BY Nicholas Adams 7/06/07

APPROVALS

ECI

B2571K220
 SH 1