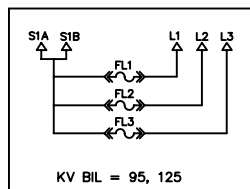


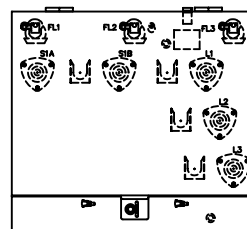
SCHEMATIC  
DIAGRAM

FRONT  
PANEL

BAYONET FUSE



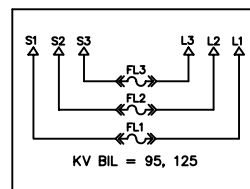
FP101



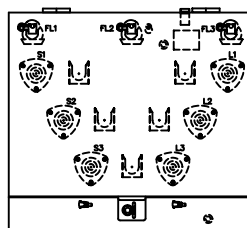
16" DOOR

36"Wx27"Dx32"H

BAYONET FUSE



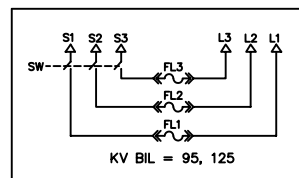
FP102



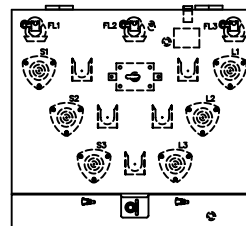
20" DOOR

36"Wx31"Dx32"W

BAYONET FUSE  
ON-OFF SW



FP103



20" DOOR

36"Wx33"Dx32"H



**ERMCO**

REVISION

REV.	DESCRIPTION	DATE	BY:	DATE	APPD.:
1	REDRAWN	5-16-02	JCS	5-16-02	AG
2	REDRAWN	10-1-02	JCS	10-1-02	AG
3	"D" WAS 29" FP 101 & 33" FP 102 "W" WAS 36" FP 102 & 103	2-7-03	JCS	2-7-03	AG
4	"W" WAS 32" FP 102 & 103	11-24-03	JCS	11-24-03	AG

TITLE: ECO-PAD COMPOSITE  
TYPE 1

SIZE  
A

DWN. BY: JCT

DATE: 3-28-01

DRAWING NUMBER

APPD. BY: AG

DATE: 3-28-01

REV. ISSUE DATE: 11-24-03

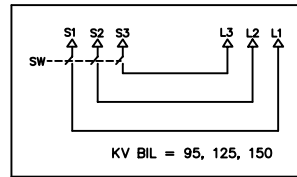
SCALE: NTS

PAGE 1  
350221-99

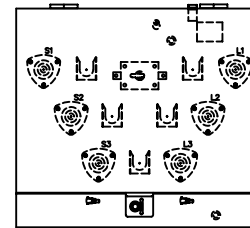
SCHMATIC  
DIAGRAM

FRONT  
PANEL

ON-OFF SW



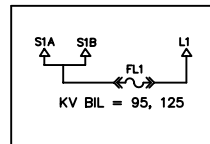
FP104



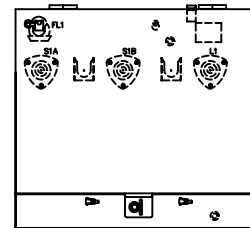
20" DOOR

36"Wx33"Dx32"H

BAYONET FUSE



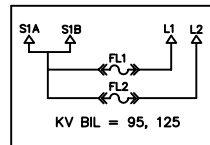
FP105



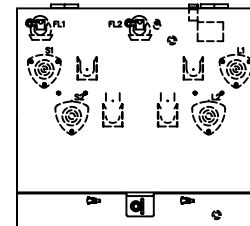
16" DOOR

34"Wx27"Dx32"H

BAYONET FUSE



FP106



16" DOOR

34"Wx27"Dx32"H



**ERMCO**

REVISION

REV.	DESCRIPTION	DATE	BY:	DATE	APPD:
1	ADDED FP107 & FP 108	11-9-01	JCT	11-9-01	AG
2	REDRAWN	5-16-02	JCS	5-16-02	AG
3	REDRAWN	10-1-02	JCS	10-1-02	AG
4	"W" WAS 36" ALL & "D" WAS 29" 105 & 106	2-7-03	JCS	2-7-03	AG
5	"W" WAS 32" ON ALL	11-24-03	JCS	11-24-03	AG

TITLE: ECO-PAD COMPOSITE  
TYPE 1

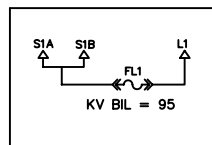
SIZE  
A

DWN. BY: JCT	DATE: 3-28-01	DRAWING NUMBER  PAGE 2 350221-99
APPD. BY: AG	DATE: 3-28-01	
REV. ISSUE DATE: 11-24-03	SCALE: NTS	

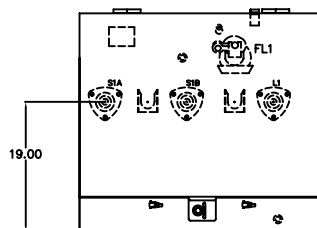
SCHEMATIC  
DIAGRAM

FRONT  
PANEL

EL BAYONET



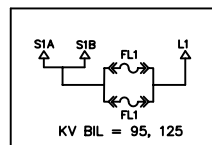
FP107



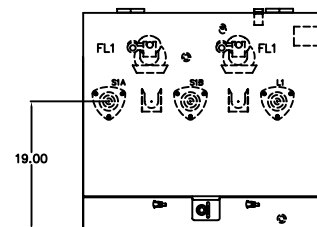
34"Wx27"Dx32"H

16" DOOR

EL BAYONET



FP109



34"Wx27"Dx32"H

16" DOOR



**ERMCO**

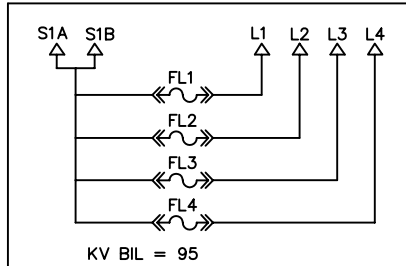
REV.	DESCRIPTION	DATE	BY:	DATE	APPD:
1	REDRAWN	5-16-02	JCS	5-16-02	AG
2	REDRAWN	10-1-02	JCS	10-1-02	AG
3	FP107 & FP109 "D" WAS 41"	12-11-02	JCS	12-11-02	AG
4	REMOVED FP108	12-19-02	JCS	12-19-02	AG
5	"W" WAS 36", 107 D WAS 29", 109 D WAS 36"	2-7-03	JCS	2-7-03	AG
6	"W" WAS 32"	11-24-03	JCS	11-24-03	AG

TITLE: ECO-PAD COMPOSITE TYPE 1		SIZE A
DWN. BY: JCS	DATE: 3-5-02	DRAWING NUMBER  PAGE 3 350221-99
APPD. BY: AG	DATE: 3-5-02	
REV. ISSUE DATE: 11-24-03	SCALE: NTS	

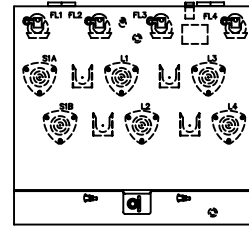
SCHEMATIC  
DIAGRAM

FRONT  
PANEL

BAYONET FUSE



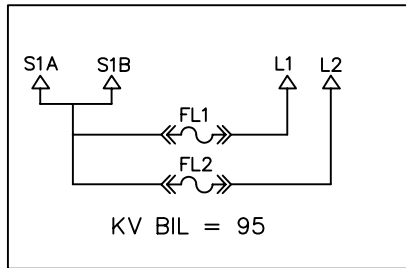
FP110



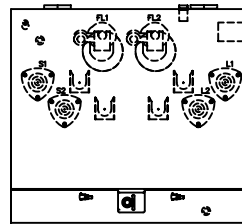
36"Wx27"Dx32"H

16" DOOR

EL BAYONET FUSE



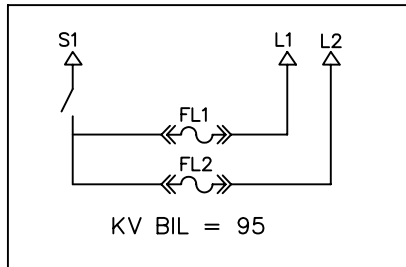
FP111



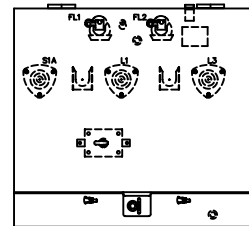
36"Wx30"Dx32"H

16" DOOR

BAYONET FUSE



FP112



34"Wx30"Dx32"H

16" DOOR



**ERMCO**

TITLE: ECO-PAD COMPOSITE  
TYPE 1

SIZE  
A

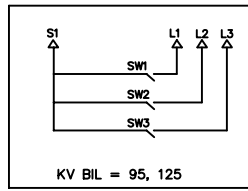
REV.	DESCRIPTION	DATE	BY:	DATE	APPD:
1	FP110 WAS 36"Wx29"Dx32"H	02-07-03	JCS	2-7-03	AG
2	FP110 WAS 32"Wx29"Dx32"H, ADD FP111 & ADD FP112	06-26-03	JCS	6-26-03	JCS
3	FP112 WAS 32" W	11-24-03	JCS	11-24-03	AG

DWN. BY: JCS	DATE: 12-13-02	DRAWING NUMBER  PAGE 4 350221-99
APPD. BY: AG	DATE: 12-13-02	
REV. ISSUE DATE: 11-24-03	SCALE: NTS	

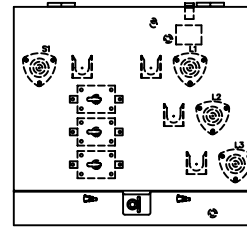
SCHEMATIC  
DIAGRAM

FRONT  
PANEL

ON-OFF SW



FP113



16" DOOR

36"Wx30"Dx32"H



**ERMCO**

TITLE: ECO-PAD COMPOSITE  
TYPE 1

SIZE  
A

REVISION					
REV.	DESCRIPTION	DATE	BY:	DATE	APPD:
1					
2					
3					

DWN. BY: JCS	DATE: 7-15-03	DRAWING NUMBER  PAGE 5 350221-99
APPD. BY: AG	DATE: 7-15-03	
REV. ISSUE DATE:	SCALE: NTS	