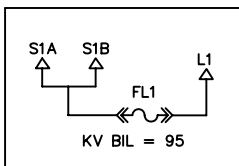


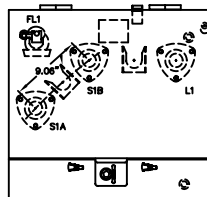
SCHEMATIC
DIAGRAM

FRONT
PANEL

BAYONET FUSE



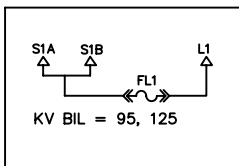
FP001



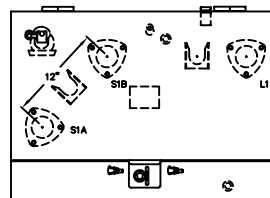
26"Wx27"Dx24"H

16" DOOR

BAYONET FUSE



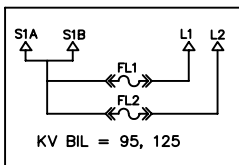
FP201



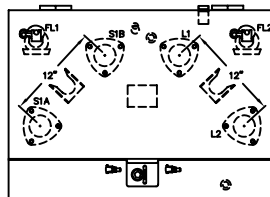
34"Wx27"Dx24"H

16" DOOR

BAYONET FUSE



FP202



34"Wx27"Dx24"H

16" DOOR



ERMCO

REVISION

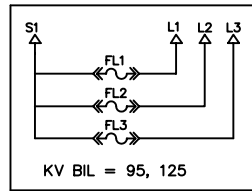
REV.	DESCRIPTION	DATE	BY:	DATE	APPD.:
1	REDRAWN	5-16-02	JCT	5-16-02	AG
2	REDRAWN	9-30-02	JCS	9-30-02	AG
3	"D" WAS 29" ON ALL & "W" WAS 34" ON 201 & 202	2-7-03	JCS	2-7-03	AG
4	"W" WAS 32 ON 201 & 202	11-21-03	JCS	11-21-03	AG

TITLE: ECO-PAD COMPOSITE TYPE 2		SIZE A
DWN. BY: JCT	DATE: 3-28-01	DRAWING NUMBER PAGE 1 350223-00
APPD. BY: AG	DATE: 3-28-01	
REV. ISSUE DATE: 11-21-03	SCALE: NTS	

SCHEMATIC
DIAGRAM

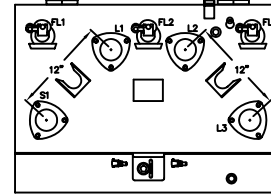
FRONT
PANEL

BAYONET FUSE



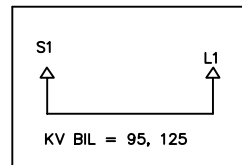
KV BIL = 95, 125

FP203



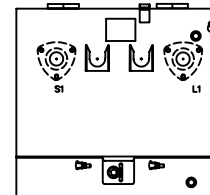
34"Wx27"Dx24"H

16" DOOR



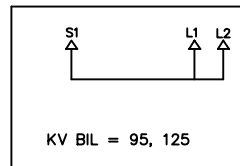
KV BIL = 95, 125

FP204



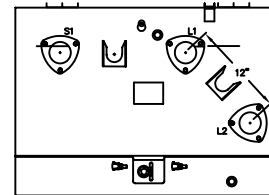
26"Wx27"Dx24"H

16" DOOR



KV BIL = 95, 125

FP205



34"Wx27"Dx24"H

16" DOOR

REVISION

REV.	DESCRIPTION	DATE	BY:	DATE	APPD:
1	ADDED FP206 & FP207	4-11-01	JCT	4-11-01	AG
2	REDRAWN	5-16-02	JCS	5-16-02	AG
3	REDRAWN	9-30-02	JCS	9-30-02	AG
4	"D" WAS 29" ON ALL & "W" WAS 34" ON 203 & 205	2-7-03	JCS	2-7-03	AG
5	"W" WAS 32 ON 203 & 205	11-21-03	JCS	11-21-03	AG



ERMCO

TITLE: ECO-PAD COMPOSITE
TYPE 2

SIZE
A

DWN. BY: JCT

DATE: 3-28-01

DRAWING NUMBER

APPD. BY: AG

DATE: 3-28-01

PAGE 2

REV. ISSUE DATE: 11-21-03

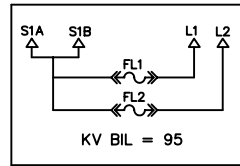
SCALE: NTS

350223-00

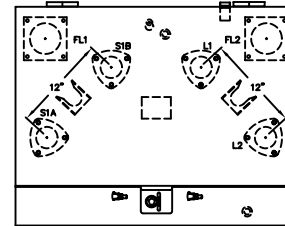
SCHEMATIC
DIAGRAM

FRONT
PANEL

DRYWELL FUSE



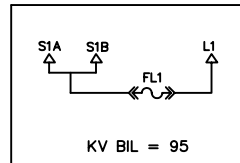
FP206



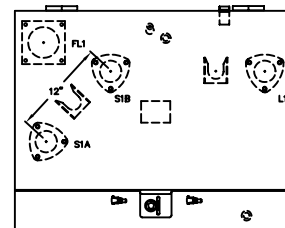
36" W x 39" D x 28" H

16" DOOR

DRYWELL FUSE



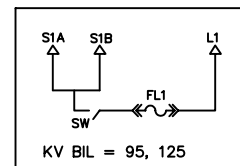
FP207



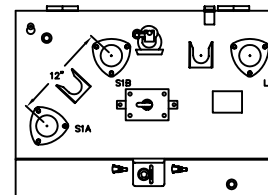
36" W x 39" D x 28" H

16" DOOR

BAYONET FUSE
ON-OFF SW



FP208



34" W x 27" D x 24" H

16" DOOR

REVISION

REV.	DESCRIPTION	DATE	BY:	DATE	APPD:
1	ADDED FP209& FP210	02-26-02	JCS	02-26-02	AG
2	REDRAWN	5-16-02	JCS	5-16-02	AG
3	ADDED FP211	07-25-02	JCS	07-25-02	AG
4	REDRAWN	10-01-02	JCS	10-01-02	AG
5	FP208 WAS 34"Wx29"Dx24"H	2-7-03	JCS	2-7-03	AG
6	"W" WAS 32" ON FP208	11-21-03	JCS	11-21-03	AG



ERMCO

TITLE: ECO-PAD COMPOSITE
TYPE 2

SIZE
A

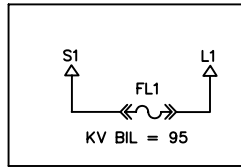
DWN. BY: JCT DATE: 4-23-01
APPD. BY: AG DATE: 4-23-01
REV. ISSUE DATE: 11-21-03 SCALE: NTS

DRAWING NUMBER
PAGE 3
350223-00

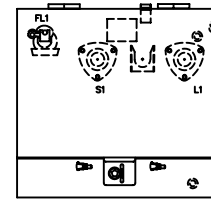
SCHEMATIC
DIAGRAM

FRONT
PANEL

BAYONET FUSE



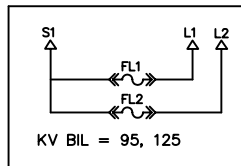
FP209



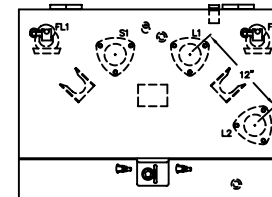
26"Wx27"Dx24"H

16" DOOR

BAYONET FUSE



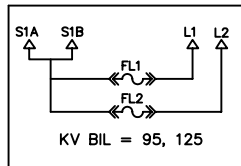
FP210



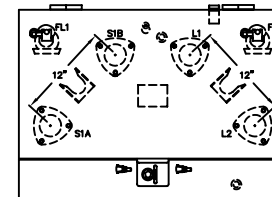
34"Wx27"Dx24"H

16" DOOR

EL BAYONET



FP211



36"Wx36"Dx26"H

16" DOOR



ERMCO

TITLE: ECO-PAD COMPOSITE
TYPE 2

SIZE
A

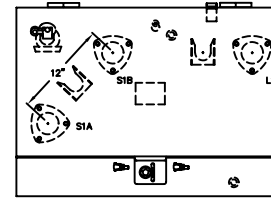
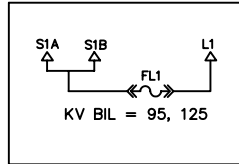
REVISION					
REV.	DESCRIPTION	DATE	BY:	DATE	APPD:
1	REDRAWN	10-1-02	JCS	10-1-02	AG
2	FP209 WAS "D" 29" & FP210 WAS 34"W, 29"D	2-7-03	JCS		
3	"W" WAS 32" ON FP210	11-21-03	JCS	11-21-03	AG

DWN. BY: JCS	DATE: 8-8-02	DRAWING NUMBER PAGE 4 350223-00
APPD. BY: AG	DATE: 8-8-02	
REV. ISSUE DATE: 11-21-03	SCALE: NTS	

SCHEMATIC
DIAGRAM

FRONT
PANEL

EL BAYONET

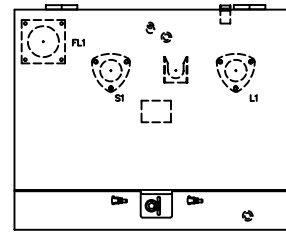
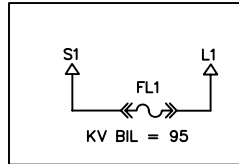


16" DOOR

FP212

36"Wx36"Dx26"H

DRYWELL FUSE

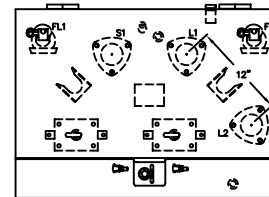
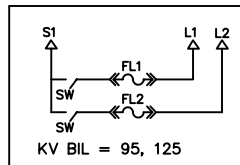


16" DOOR

FP213

34"Wx39"Dx24"H

BAYONET FUSE
ON-OFF SW



16" DOOR

FP214

34"Wx27"Dx24"H



TITLE: ECO-PAD COMPOSITE
TYPE 2

SIZE
A

REVISION

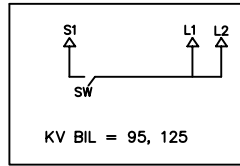
REV.	DESCRIPTION	DATE	BY:	DATE	APPD:
1	ADDED FP213	10-23-02	JCS	10-23-02	AG
2	ADDED FP214	2-25-03	JCS	2-25-03	AG
3	"W" WAS 32" ON FP 213 & 214	11-21-03	JCS	11-21-03	AG

DWN. BY: JCS	DATE: 10-01-02	DRAWING NUMBER PAGE 5 350223-00
APPD. BY: AG	DATE: 10-01-02	
REV. ISSUE DATE: 11-21-03	SCALE: NTS	

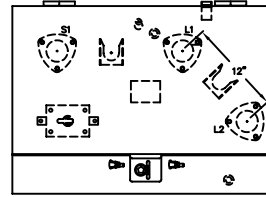
SCHEMATIC
DIAGRAM

FRONT
PANEL

ON-OFF SW



FP215



16" DOOR

34"Wx28"Dx24"H



ERMCO

REVISION

REV.	DESCRIPTION	DATE	BY:	DATE	APPD:
1	"W" WAS 32" ON FP215	11-21-03	JCS	11-21-03	AG
2					
3					
4					

TITLE: ECO-PAD COMPOSITE TYPE 2		SIZE A
DWN. BY: JCS	DATE: 7-29-03	DRAWING NUMBER PAGE 6 350223-00
APPD. BY: AG	DATE: 7-29-03	
REV. ISSUE DATE: 11-21-03	SCALE: NTS	