

Three Phase Pad Mounted Distribution Transformers

ⓧ-PADs are designed and manufactured in compliance with all applicable ANSI and RUS standards. All transformers are oil filled, 65°C rise, and designed for usual service conditions per ANSI C57.12.00.

Ratings available are 30 through 2500 kVA with primary voltages 2.4 through 35 kV (150 kV BIL) and secondary voltages up to 600 volts.

KVA and Standard Voltage Offerings

- All standard tap configurations available.
- Dual voltage available in most combinations.
 - *Dual voltage with taps available (series connection)*
- Impedance and loss options available in most designs.



kVA	H.V.	BIL (kV)	L.V.
30	2400	60	240 Δ 120 tap 208Y/120 480Y/277 240 Δ 480 Δ 600Y/347
45	4160	75	
75	4800	95	
112.5	7200	95	
150	7620	95	
225	7970	95	
300	11400	125	
500	12000	125	
750	13200	125	
1000	13800	125	
1500	14400	125	
2000	14400	125	
2500	19920	150	





Product Features

Tanks:

- All bracing is internal
- Removable cover
- Pedestal base
 - Reduces weight
 - Improved corrosion protection

Bushings:

- Externally clamped with stainless steel studs and plated hardware
- Internal leads are sized for bushing extraction in times of maintenance or repair

Corrosion Protection:

- 100% of the padmount receives a paint finish that exceeds all ANSI requirements including 160 in-lb impact, 2000 hour salt spray, 1000 hours QUV and 20 cycle SCAB.
- ERMCO furnishes a 100% powder paint coverage.
- For added protection, extra paint thickness is applied around the base.



Precision Metal Fabrication



Powder Paint Application



Core/Coil Assembly

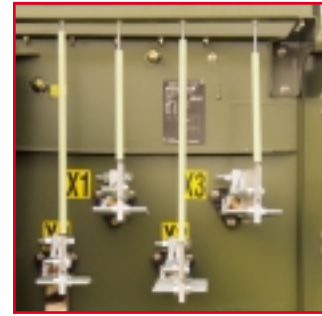
Bonus Features

(Standard on all ERMCO Padmount Transformers)

- Low Profile
 - Unique design exceeds ANSI tamper requirements
- Instruction book with photos supplied with each transformer
- Metal parts are rounded for improved safety and corrosion protection
- Cabinet sides
 - Hinged for easy access
 - Lock in open position
 - Securely fastened with spring loaded locking device
 - Removable
- Cabinet Hood
 - Hinged
 - Locks in 2 raised positions
 - Removable (one locking bolt)
 - Enables cables to be pulled vertically
- Cabinet Doors
 - Lock in open position
 - Removable (easy lift handle)
- Sill
 - Removable (five bolts)

Equipment Options

Accessory	Default Standard	Available
H.V. Fuse	Bay-O-Net with drip shield	Weak link, valve Bay-O-Net, CL fuse (dry well or internal)
L.V. Breaker	None	Magnetic or thermal trip, emergency overload
Arrester	None	Internal under oil HV arrester, LV surge arrester
H.V. Bushings	Wells with fixed stud	Removable stud wells, wells & inserts, integral load break bushings
L.V. Bushings	Stud and NEMA spade with jam nut	Stud only, integral spade, variety of connectors, supported LV bushings
Markings	kVA decal	Generic or customer specific decals, bar codes, stenciling, customer stock codes, serial numbering, and other markings
Taps/Dual Voltage	Cap wrench handle	Lever handle or hook stick handle
Nameplate	Laser etched aluminum	Stainless steel, special information bar code, material stock code, or practically any purchaser data
Tank	Mild steel (green color)	Gray or Tan color, hybrid(stainless pedestal and sill), undercoating, full 304L stainless
Fittings	1" drain with sampler and fill plug	Various valves and gauges
Core/Coil	Five legged	Triplex
Front Panel	ANSI minimum	ANSI specific or customer specified



L.V. Bushing Supports



Rounded Metal Edges



Side Wall Locking Device

ERMCO

2225 Industrial Rd.
Dyersburg, TN 38024
1.800.238.5587

ERMCO Components, Inc.

1607 Industrial Rd.
Greeneville, TN 37745
1.877.267.1855

www.ermco-eci.com

Quality and Reliability

- All electrical testing is per ANSI standards.
- Many other tests are made for control purposes such as, core loop loss and exciting current, coil ratio and polarity, oil properties, and multiple oil leak checks.

Warranty

- All ERMCO padmounts carry a full 2 year warranty.
- Includes lightning caused failures provided the transformer was installed, protected, and operated in accordance with normal industry accepted practices.
- Coverage includes round trip transportation between the purchasers shipping dock and the repair facility.

Maintenance

- All cabinet parts interchange with like size
- Removable tank cover
- Full access to internal components

ERMCO = Reliability + Quality + Service
...Why Not the Best?



Quality Assurance



Removable Tank Cover



Unique Cabinet Design