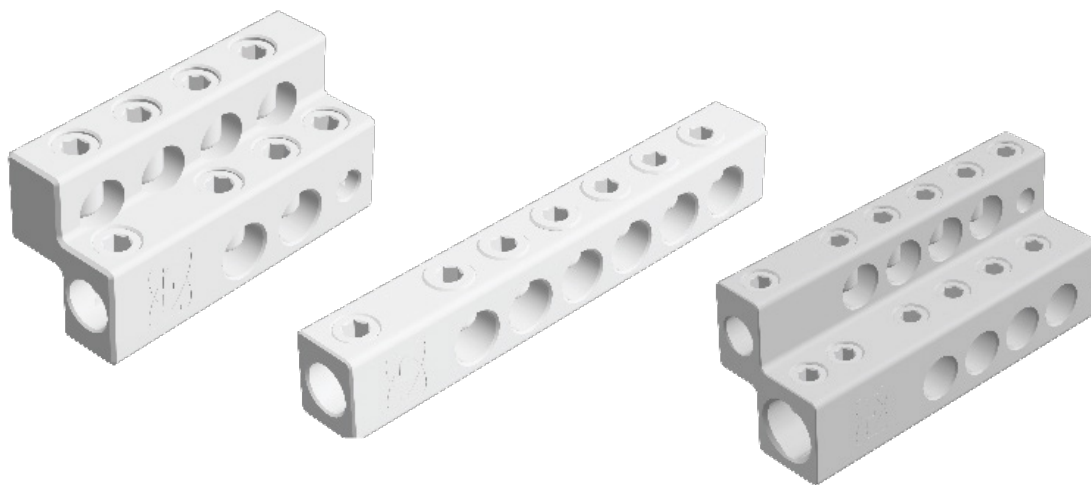


# Low Voltage Connectors 350 KCMIL



**Enhanced Performance:** Built with high-strength aluminum alloy to optimize both electrical and mechanical performance.

**Versatile Compatibility:** Suitable for both aluminum and copper conductors, thanks to dual-rating certification.

**Optimal Contact:** Ball-bottom screws maximize conductor pressure while eliminating interstrand oxides for improved reliability.

**Industry-Compliant:** Exceeds the standards set by ANSI C119.4 for assured quality and durability.

ANSI C119.4 - 2022 - Class A  
at 600 Amp

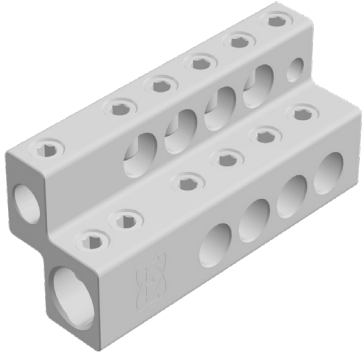
High-strength 6061-T6 Al

5/8" Stud Mount

KCMIL Wire Range 350 - #10



For more information contact your  
ERMCO Components representative  
or call (877) 267-1855



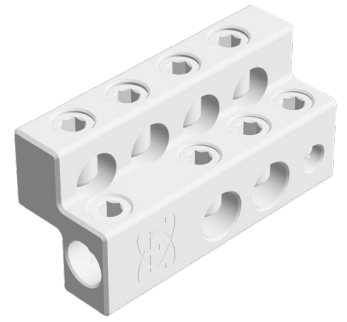
**2A506101G02**

8-Position Z-Bar Connector



**2A506100G01**

6-Position Straight Body Connector



**2A506101G01**

6-Position Z-Bar Connector

Test	Standard	Details	Results
<b>CURRENT CYCLING TEST</b>	ANSI C119.4 - 2022	The Current Cycling Test to evaluate thermal and resistance stability using the CCT Method for 500 cycles	Pass - Class A
<b>MECHANICAL STRENGTH CANTILEVER</b>	IEEE C19.02-2023	Max and sustained Cantilever Test in accordance for bushings standards.	Pass- 6061-T6 Al
<b>MECHANICAL STRENGTH STUD PULL OUT</b>	ANSI C119.4-2022	Max Pull-out strength at rated strength for the conductor without damaging the connector.	Pass
<b>MECHANICAL STRENGTH SUSTAINED LOAD</b>	ANSI C119.4-2022	Sustained 80% of rated conductor strength for 168 hours without damaging the connector.	Pass
<b>SALT FOG TEST</b>	ANSI C119.4-2022 & ASTM B117-19	Accelerated corrosion test alternating 24-hour periods of salt fog exposure and drying conditions for a minimum of four 24-hour periods (two wet and two dry).	Pass

ERMCO Components  
1607 Industrial Road  
Greeneville, TN 37745



**ERMCO**  
COMPONENTS

Toll Free: (877) 267-1855  
Fax (423) 636-6492

