

Under Oil Surge Arrester Disconnect Switch and Neutral Disconnect Switch



ECI, ERMCO Components Inc.
1607 Industrial Road
Greeneville, TN 37745
Phone: (423) 638-2302
Toll Free: (877) 267-1855
Fax (423) 636-6492

General Information

Externally operated switch that provides a means of performing electrical testing of transformers that are equipped with an internal under oil lighting arrester.

Table 1
Voltage Ratings and Characteristics

Description	kV
Standard Voltage Class	35
BIL (Full Wave Crest) (In Open Position)	150

The switch is for testing the transformer. It is a de-energized switch only.

When performing the ANSI required impulse test on a transformer, the under oil arrester must be removed from the circuit or else the arrester will operate and the transformer coils will not be tested. The arrester disconnect switch must be open before dielectric testing of the transformer to prevent misleading results and possible arrester damage.

To open the switch, unscrew the plug/shaft, pull the plug/ shaft out to the stop to disconnect the arrester ground. Reverse the procedure to close the switch.



For more information about the Under
Oil Arrester, contact your Ermco
Components representative or call (877)
267-1855

Ordering Information and Tank Hole Details

Arrester Disconnect Switch				
Catalog Number	Type	Decal Supplied	Faston Tab	Details
7529ZA0999	Pole	Yes	Yes	
7529ZA1099	Pole	Yes	No	

[Figure 3 on page 3](#)

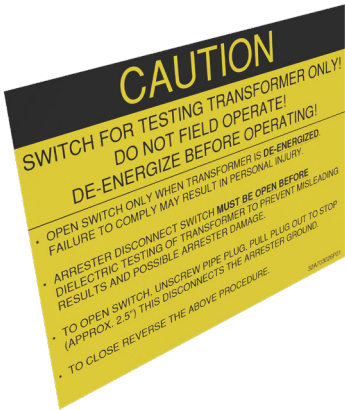
Arrester Disconnect Switch				
Catalog Number	Type	Decal Supplied	Faston Tab	Details
7529ZA0899	Pad	Yes	Yes	
7529ZA1199	Pad	Yes	No	

[Figure 4 on page 3](#)

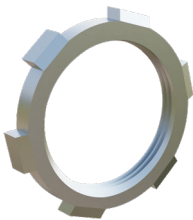
Neutral Disconnect Switch				
Catalog Number	Type	Decal Supplied	Faston Tab	Details
7529ZA8599	3 Phase	Yes	No	
7529ZA8699	3 Phase	Yes	No	

[Figure 7 on page 5](#)

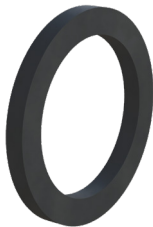
[Figure 6 on page 5](#)



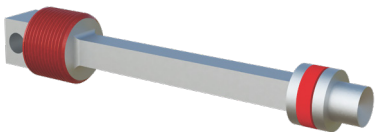
5219ZF0199
(Decal)



4399ZF0199
(Locknut)



5111ZF0199
(Gasket)



7529ZA0399
(Plug and Shaft)

Figure 1
Replacement Parts

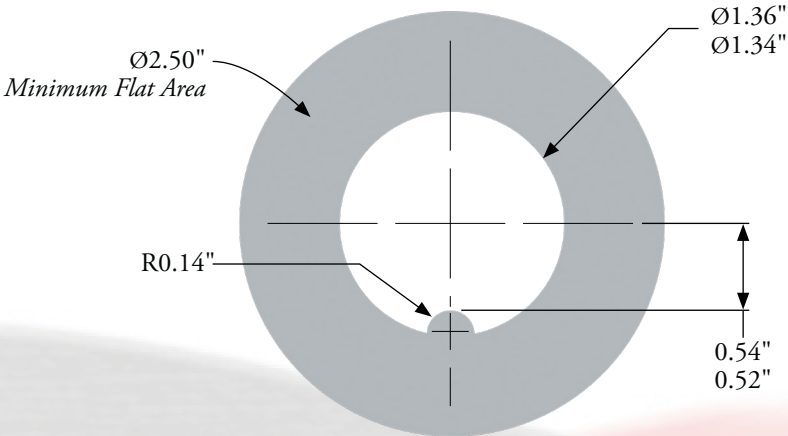


Figure 2
Tank Hole Detail
Note: Dimensions are given for reference only.

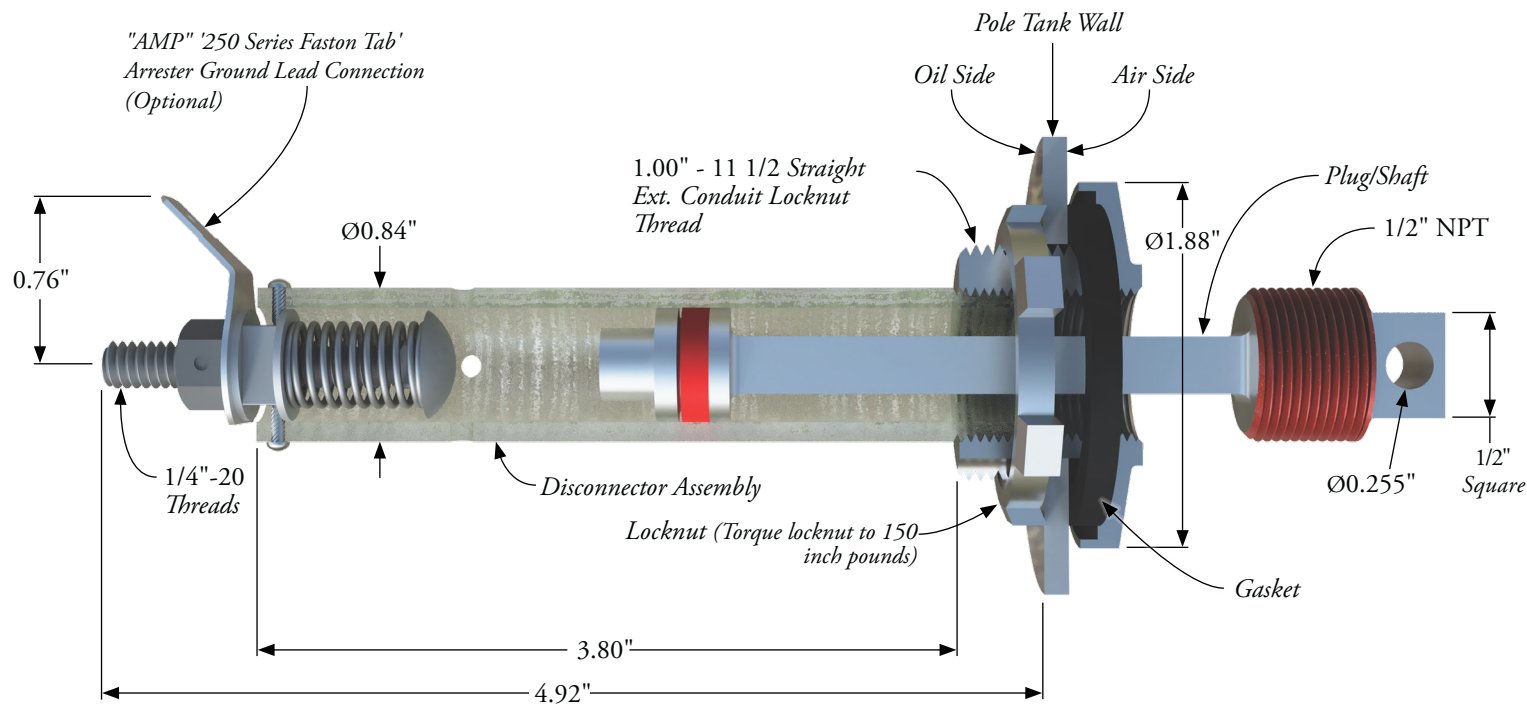


Figure 3
Arrester Disconnect Switch
Internally Secured - Pole Type

Note: Dimensions are given for reference only.

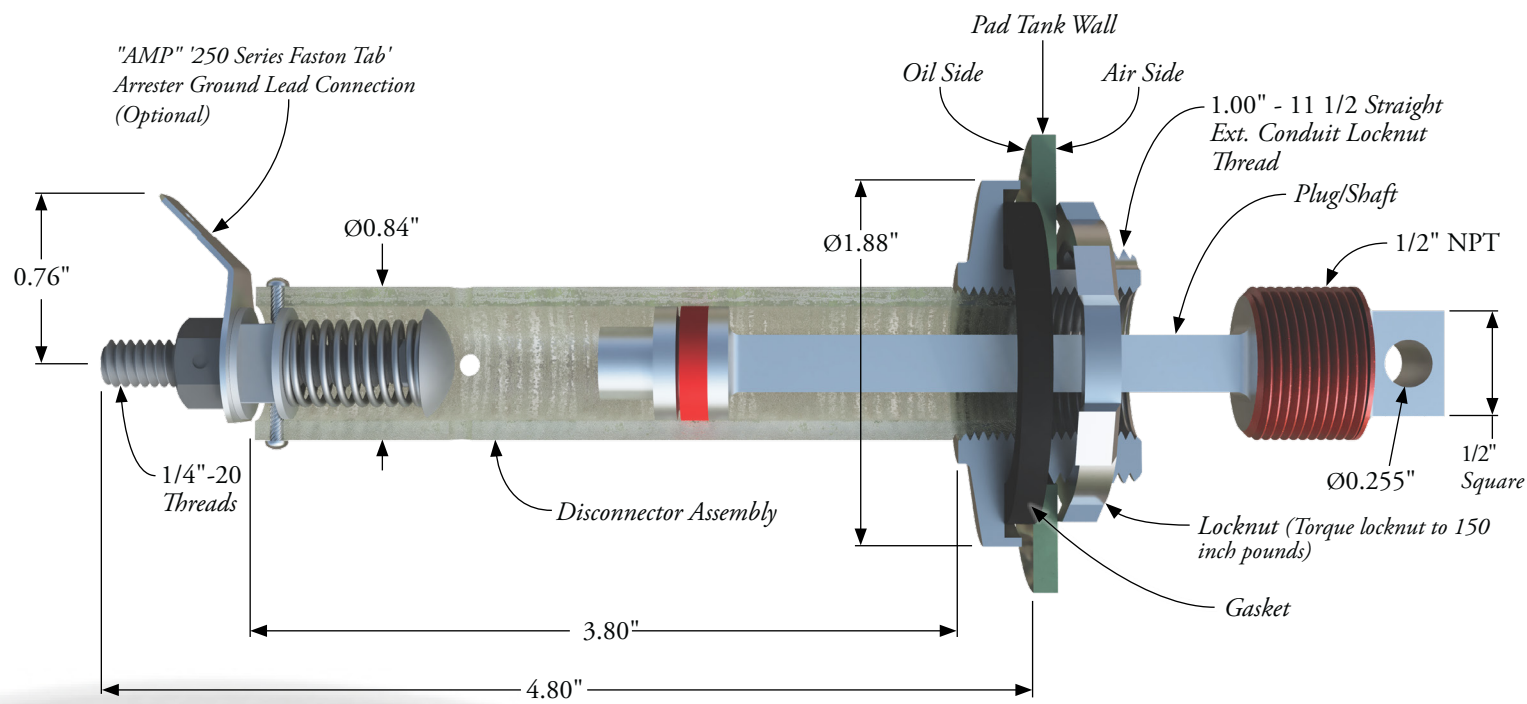


Figure 4
Arrester Disconnect Switch
Externally Secured - Pad Type

Note: Dimensions are given for reference only.

CAUTION

SWITCH FOR TESTING TRANSFORMER ONLY!
DO NOT FIELD OPERATE! DE-ENERGIZE
BEFORE OPERATING!

- OPEN SWITCH ONLY WHEN TRANSFORMER IS **DE-ENERGIZED**. FAILURE TO COMPLY MAY RESULT IN PERSONAL INJURY.
- ARRESTER DISCONNECT SWITCH **MUST BE OPEN BEFORE** DIELECTRIC TESTING OF TRANSFORMER TO PREVENT MISLEADING RESULTS AND POSSIBLE ARRESTER DAMAGE.
- TO OPEN SWITCH, UNSCREW PIPE PLUG, PULL PLUG OUT TO STOP (APPROX. 2.5") THIS DISCONNECTS THE ARRESTER GROUND.
- TO CLOSE REVERSE THE ABOVE PROCEDURE.

32A703026P01

Decal

To assure full BIL the plug / shaft must be in the withdrawn position and the tube filled with oil during transformer insulation testing. After testing push in the plug / shaft and screw threads into flange.

Note that the plug / shaft is supplied with thread sealant
(no teflon tape or other thread sealant necessary)

1. Torque locknut to 150 inch pounds.
2. Locknut, gasket and plug assembly shipped unassembled.
3. Locate decal on tank adjacent to disconnecter.

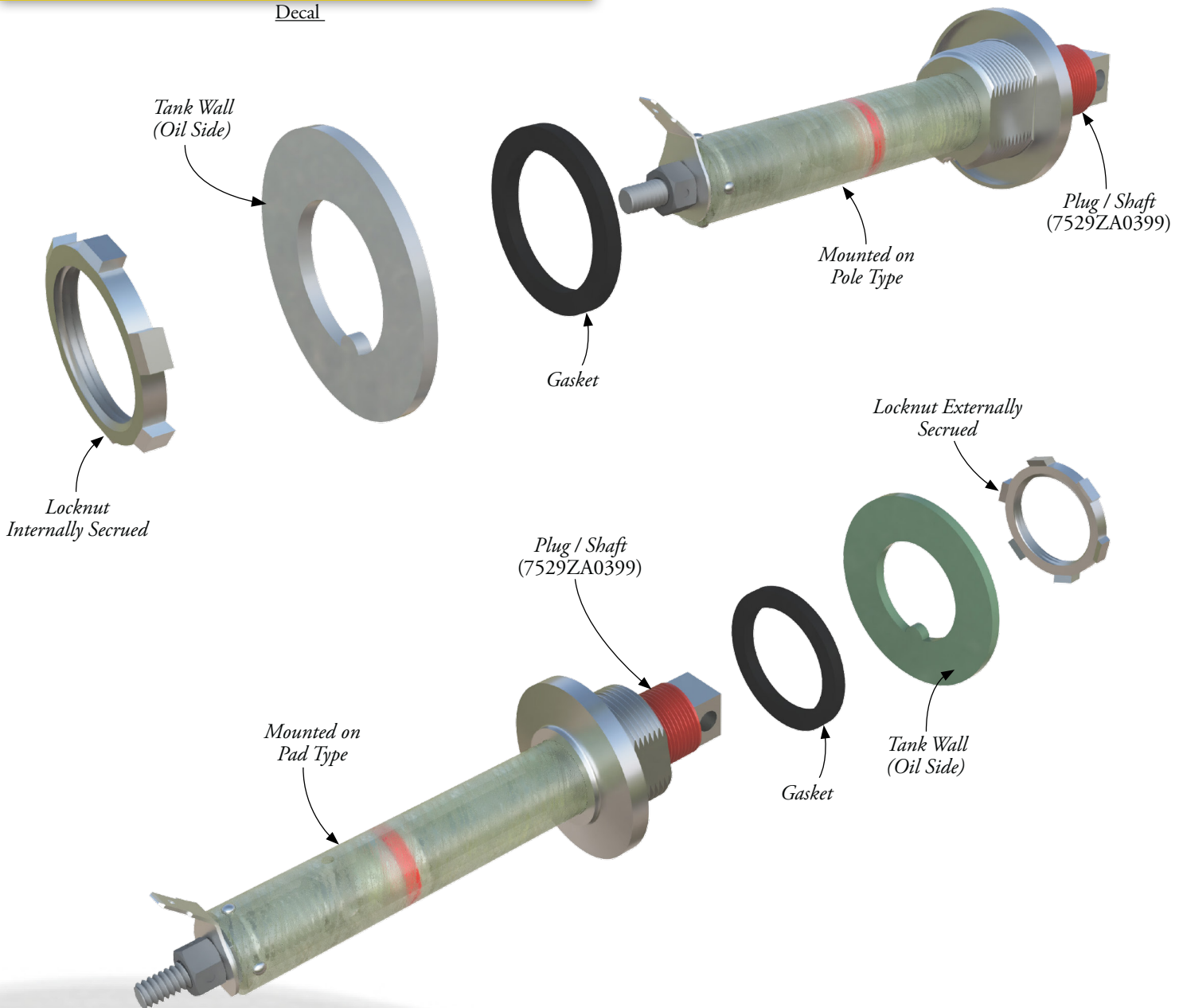


Figure 5

Arrester Disconnect Switch

Mount to Tank Wall (Internally and Externally)

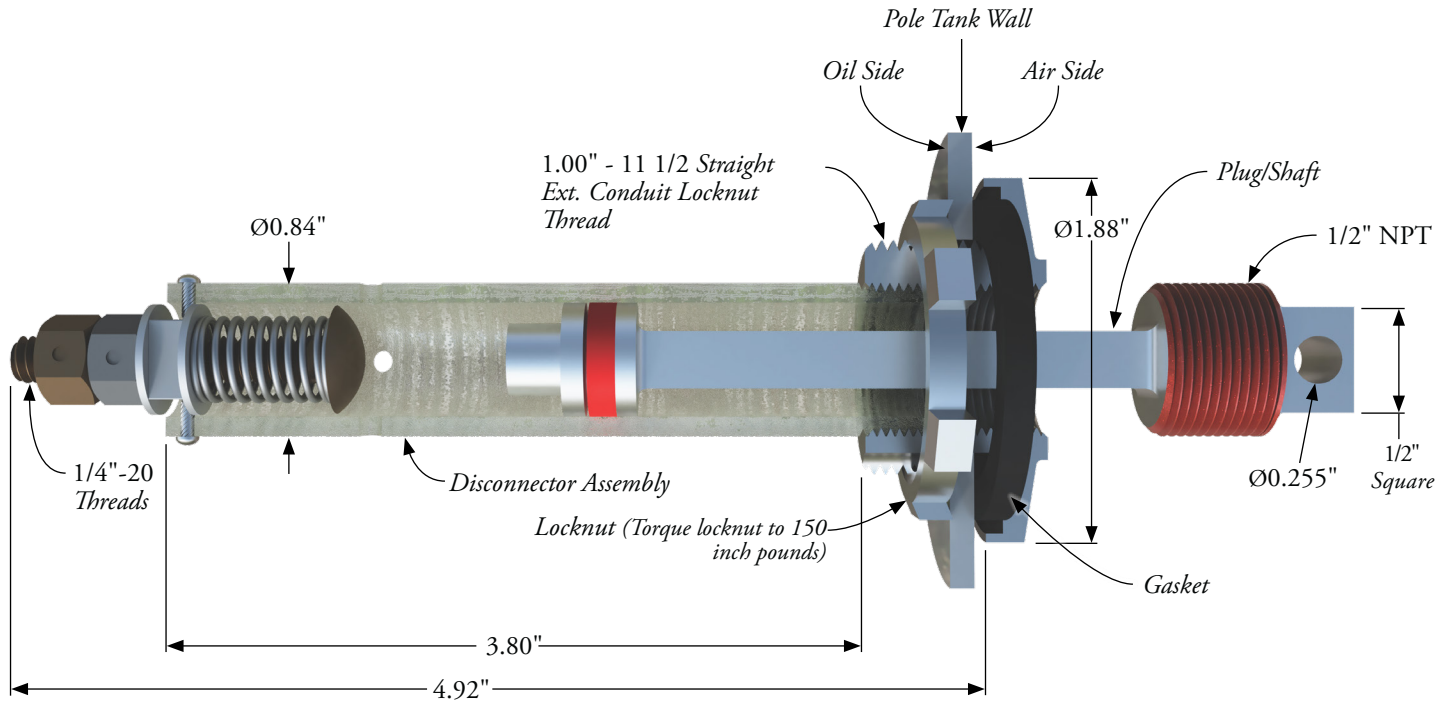


Figure 6

Under Oil Neutral Disconnect Switch
Internally Secured

Note: Dimensions are given for reference only.

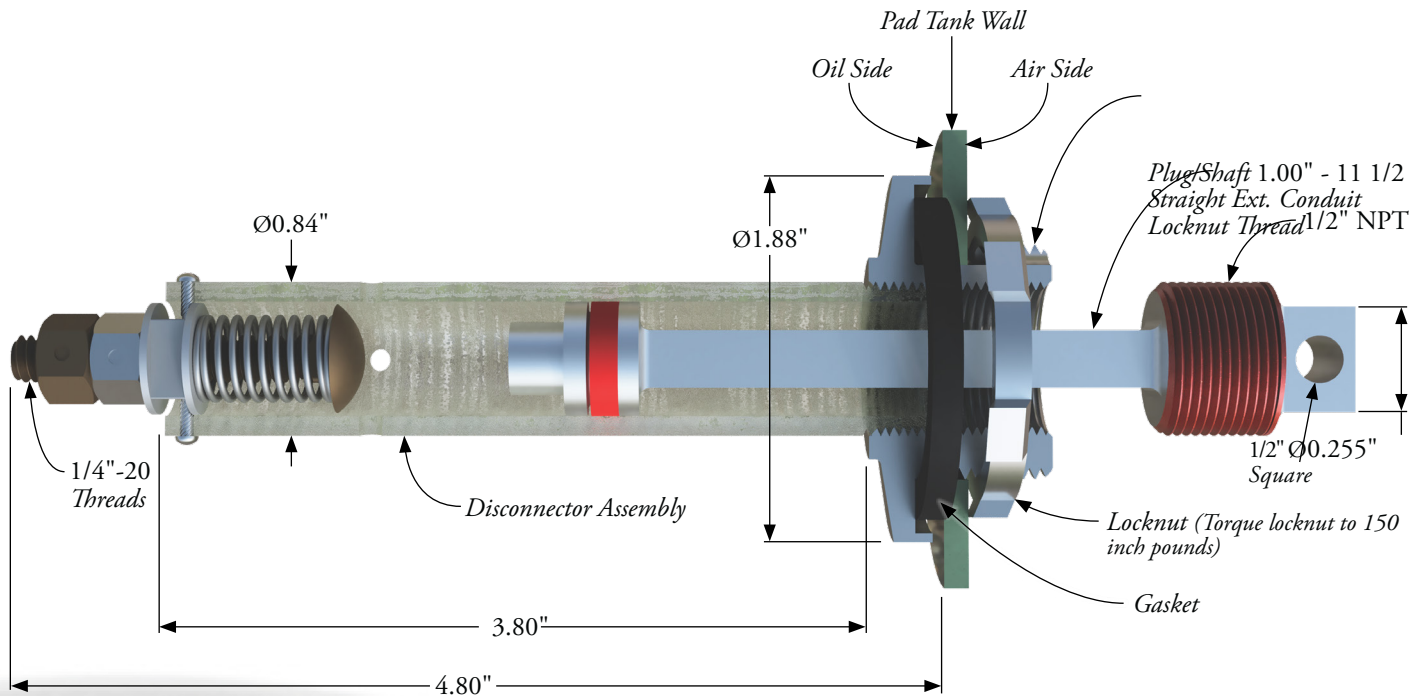


Figure 7

Neutral Disconnect Switch
Externally Secured

Note: Dimensions are given for reference only.

CAUTION

SWITCH FOR TESTING TRANSFORMER ONLY!
DO NOT FIELD OPERATE! DE-ENERGIZE
BEFORE OPERATING!

- OPEN SWITCH ONLY WHEN TRANSFORMER IS **DE-ENERGIZED**. FAILURE TO COMPLY MAY RESULT IN PERSONAL INJURY.
- NEUTRAL DISCONNECT SWITCH **MUST BE OPEN BEFORE** DIELECTRIC TESTING OF TRANSFORMER TO PREVENT MISLEADING RESULTS AND POSSIBLE DAMAGE.
- TO OPEN SWITCH, UNSCREW PIPE PLUG, PULL PLUG OUT TO STOP (APPROX. 2.5") THIS DISCONNECTS THE GROUND.
- TO CLOSE REVERSE THE ABOVE PROCEDURE.

32A703026P02

To assure full BIL the plug / shaft must be in the withdrawn position and the tube filled with oil during transformer insulation testing. After testing push in the plug / shaft and screw threads into flange.

Note that the plug / shaft is supplied with thread sealant
(no teflon tape or other thread sealant necessary)

1. Torque locknut to 150 inch pounds.
2. Locknut, gasket and plug assembly shipped unassembled.
3. Locate decal on tank adjacent to disconnect.

Decal

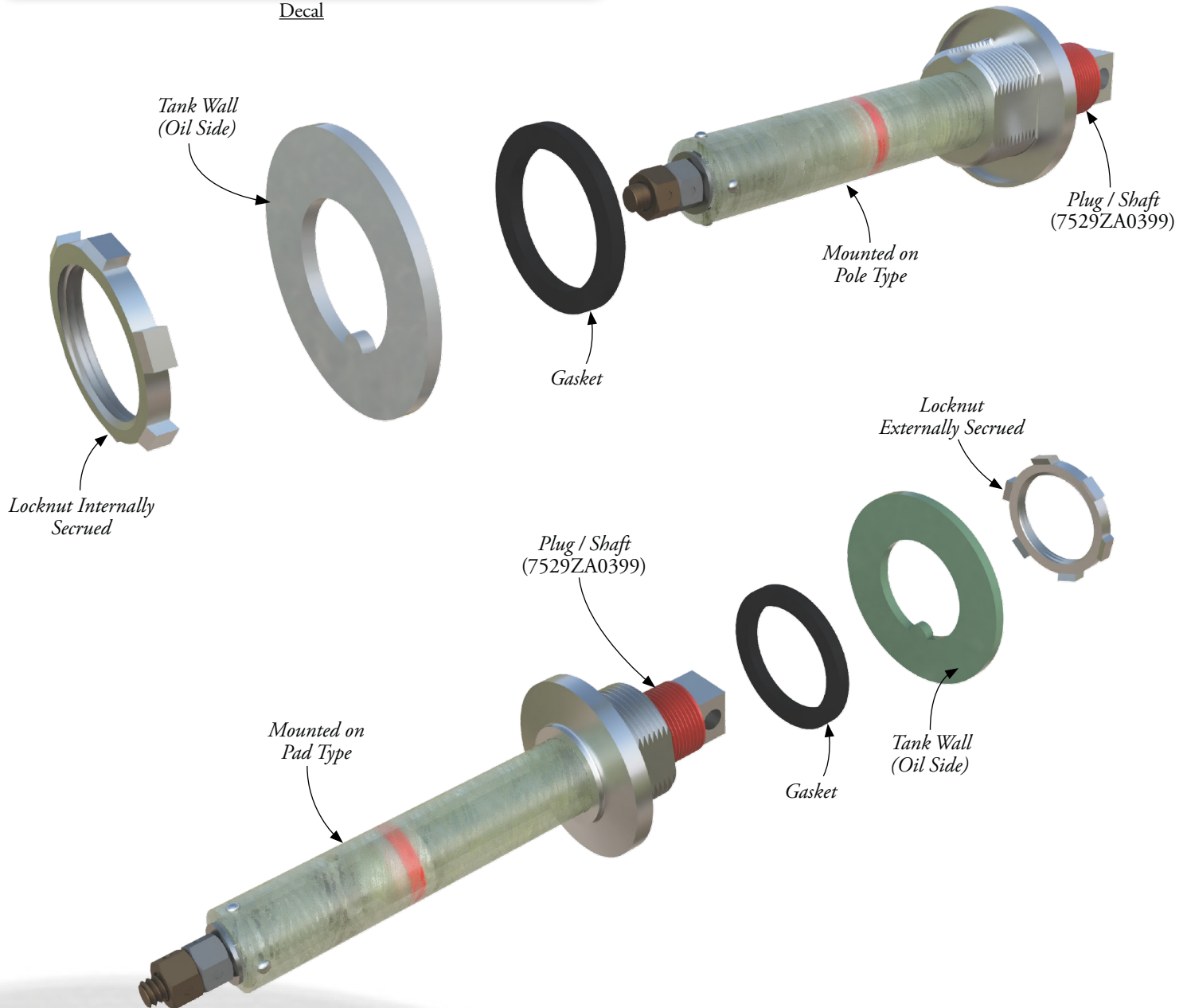


Figure 8

Neutral Disconnect Switch

Mount to Tank Wall (Internally and Externally)



Made in USA

ERMCO Components Inc.
1607 Industrial Road
Greeneville, TN 37745



Phone: (423) 638-2302
Toll Free: (877) 267-1855
Fax (423) 636-6492

