
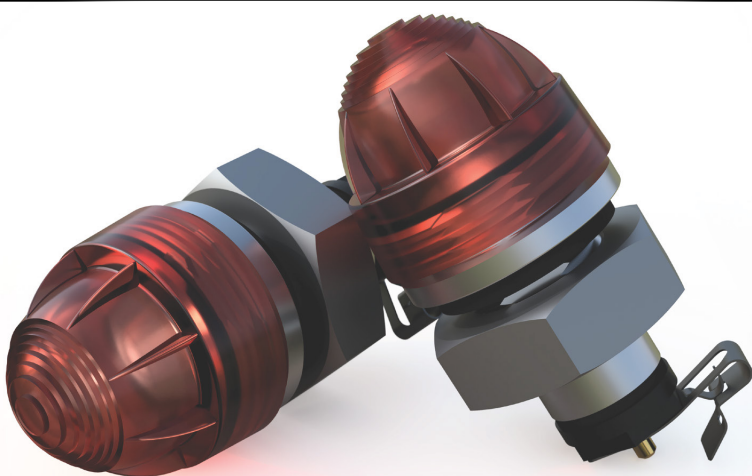


Signal Light



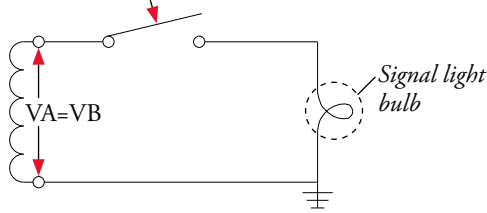
ECI, ERMCO Components Inc.
1607 Industrial Road
Greenville, TN 37745 Phone:
(423) 638-2302 Toll Free: (877)
267-1855 Fax (423) 636-6492



Signal Light Assembly	
Catalog Part number	7591ZE9399

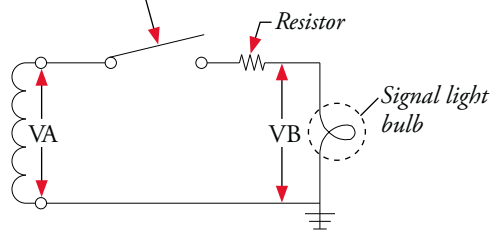
Typical Circuit Schematics

Actuating switch
(Circuit breaker or Overload indicator)

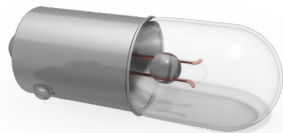


Circuit to be used when available voltage is within recommended operating range of bulb.

Actuating switch
(Circuit breaker or Overload indicator)



Circuit to be used when available voltage exceeds the maximum recommended operating voltage of bulb.



Signal light bulb - #44 GE (6V/250 mA)	
Operating voltage (Volts)	Expected bulb life (hours)
6.7 (Maximum recommended based on bulb life)	1,000
6.3	3,000
3.5 (Minimum recommended based on illumination)	Data not available

General Information

Our signal light uses a standard 6V/250mA, GE bulb No. 44, and is replaceable from outside the transformer by removing the signal light lens.

Rotating the circuit breaker operating handle to beyond the closed position should cause the signal light to come on. If it does not, the bulb should be replaced.

Faulty bulbs should be replaced, since operating the transformer with a faulty bulb or without a bulb may result in radio noise.



For more information about Signal Light, contact your Ermco Components representative or call (877) 267-1855

Two ways to check signal light connection

1. While the transformer is energized, rotate the circuit breaker operating handle beyond the closed position causing the signal light to come on.
2. Check without voltage by removing the bulb and measuring the continuity when the operating handle is rotated beyond the closed position.

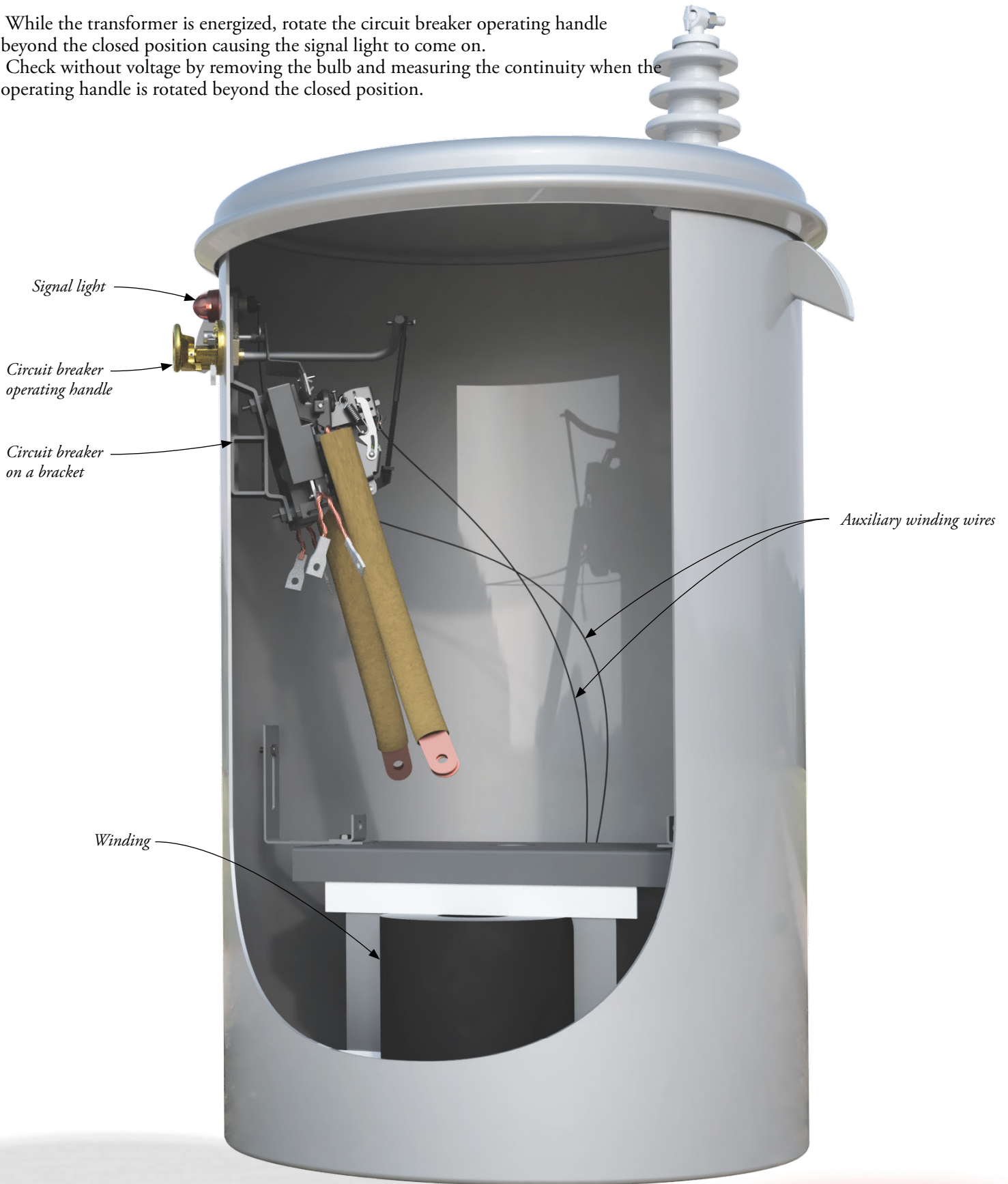


Figure 1
Pole Mounted Transformer with Signal Light

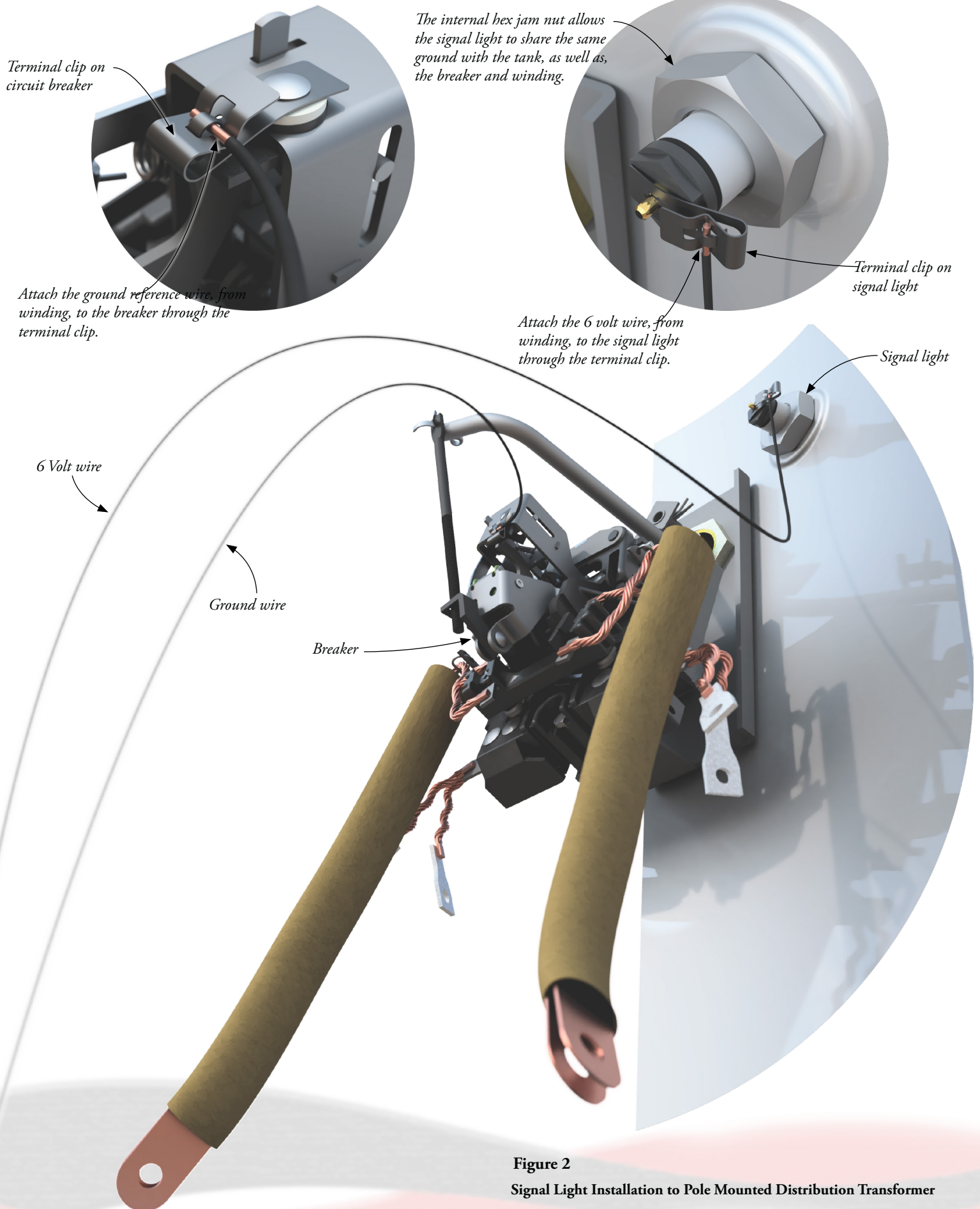


Figure 2
Signal Light Installation to Pole Mounted Distribution Transformer

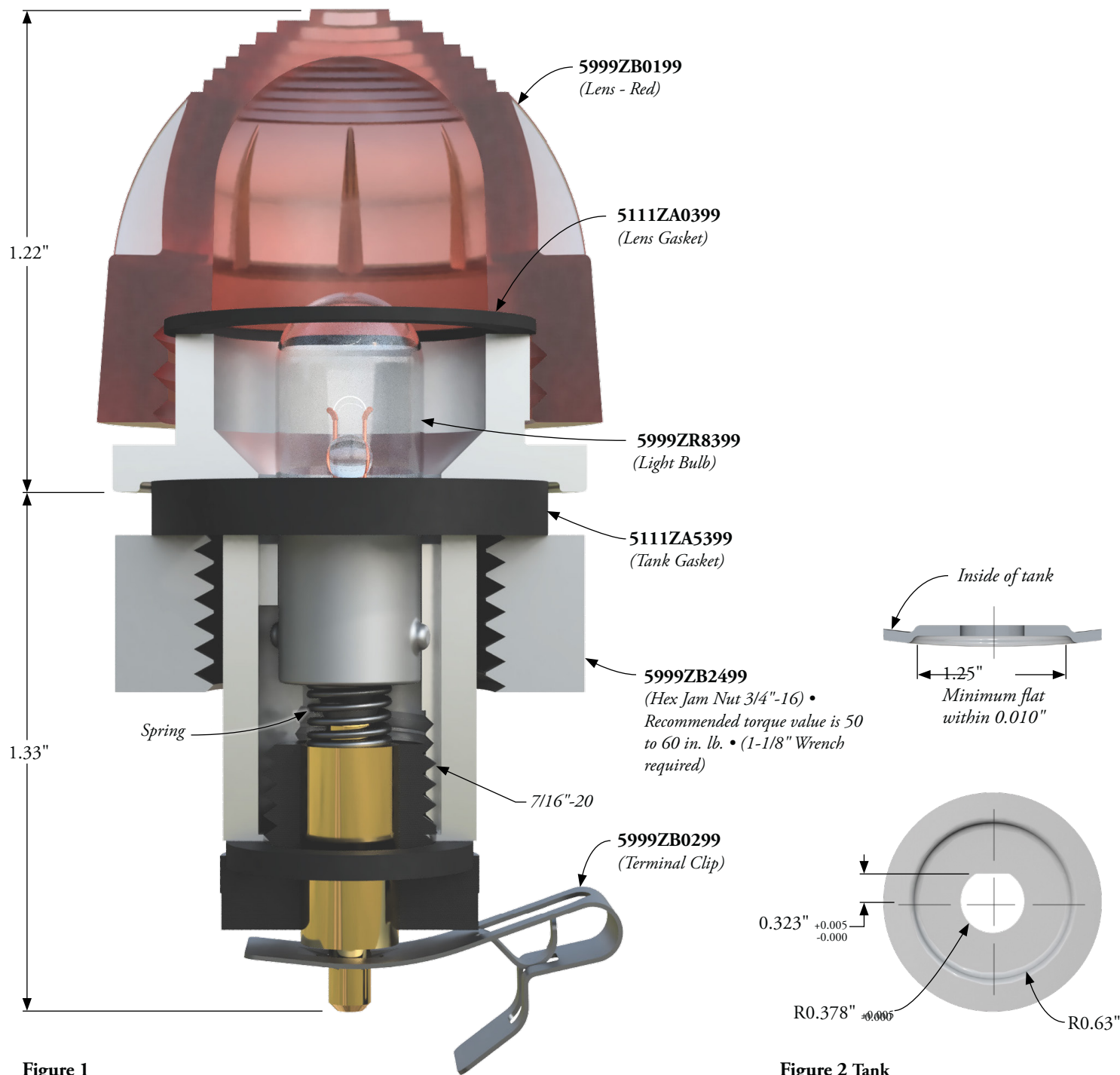


Figure 1
Signal Light Assembly

Note: Dimensions are given for reference only.

Table 1
Signal Light

Catalog Number	Description
7591ZE9399	Signal Light Assembly

Figure 2
Tank Hole Details

Table 2
Replacement Parts

Catalog Number	Description
5999ZB0199	Lens (Red)
5111ZA0399	Lens Gasket
5999ZR8399	Light Bulb
5111ZA5399	Tank Gasket
5999ZB2499	Hex Jam Nut (3/4"-16)
5999ZB0299	Terminal Clip



Made in USA

ERMCO Components Inc.
1607 Industrial Road
Greeneville, TN 37745



Phone: (423) 638-2302
Toll Free: (877) 267-1855
Fax (423) 636-6492

