



# Single Phase Pad Mounted Distribution Transformer

Engineered for Performance. Built for the Grid.




# Products Built Beyond Standards

---

**Discover Transformers and Components Built  
to Keep Your Community Powered.**

We ensure that families and businesses have the power they need. Every ERMCO Distribution Transformer and Component is engineered for lasting performance and proven reliability to keep the world powered in even the toughest conditions.



With unparalleled build quality and customer support, see why customers worldwide partner with ERMCO when it matters most.



## Types of Single Phase Pad Mounted Transformers

Type 1 and Type 2	TrimLine	MicroTrim
ERMCO's full-size product line has a wide variety in options and ratings. These comply with IEEE Standard C57.12.38.	Ideal for customers seeking lower cost and smaller size without sacrificing operating room. The TrimLine follows the Type 2 design except the distance between HV bushings is 9 inches (IEEE is 12 inches at 15.5 kV).	Offers the lowest cost and is the most compact padmount in the ERMCO line.

Type Offered	Type 1	Type 2	TrimLine	MicroTrim
kVA Ratings	5-250	5-250	5-50	5-25
High Voltage	2.4 - 19.9kV	2.4 - 19.9kV	2.4 - 14.4kV	2.4 - 14.4kV
BIL	150 kV (max)	150 kV (max)	125 kV (max)	125 kV (max)
Low Voltage	600v (max)	600v (max)	600v (max)	600v (max)



ERMCO single phase pad mounted distribution transformers are designed and manufactured in compliance with all applicable IEEE and RUS standards. All transformers are oil filled, 65°C rise, and designed for usual service conditions per IEEE C57.12.00.

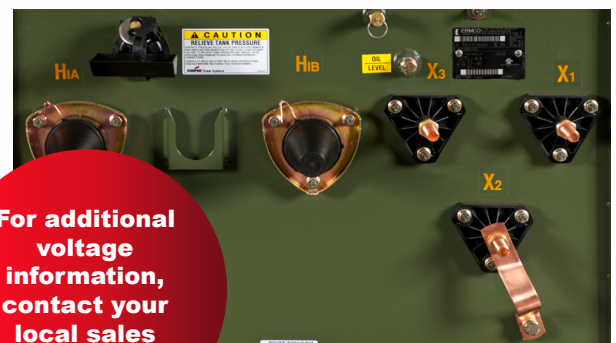
## kVA and Standard Voltage Offerings

- All standard tap configurations available.
- Dual voltage available in most combinations.
  - » Dual voltage with taps in higher voltage position only.
  - » Dual voltage: Highest BIL applies to both voltages.
- Additional voltages may be available, consult with our outside sales representatives.
- Impedance and loss options available in most designs.

kVA	H.V.	BIL (kV)	L.V.
5	2400	60	240/120
7.5	4160	75	480/240
10	4800	95	277
15	7200	95	
25	7620	95	
37.5	7970	95	
50	11400	95 or 125	
75	12000	95 or 125	
100	13200	95 or 125	
167	13800	95 or 125	
250	14400	125	
	19920	125 or 150	



Engineered for excellence, discover the distribution transformers built to withstand your toughest demands and deliver lasting performance.



For additional voltage information, contact your local sales representative



## Product Features

---

### Tanks:

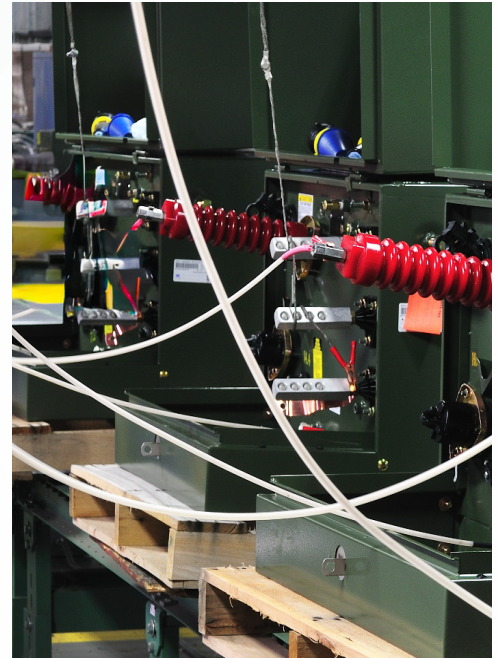
- Lifting provisions are stainless steel pads recessed into the tank side.
- Hood is attached with stainless steel hinges, and requires no special tools for removal.
- Recessed locking provision has a handy grip for opening the hood.
- Locking nut and backing plate are 300 grade stainless steel for long service life.

### Bushings:

- Externally clamped with stainless steel studs and plated hardware.
- Internal leads are sized for bushing extraction in times of maintenance or repair.

### Corrosion Protection:

- 100% of the padmount receives a paint finish that exceeds all IEEE requirements including 160 in-lb impact, 2000 hour salt spray, 1000 hours QUV and 20 cycle SCAB.
- ERMCO developed a method to cure power paint on the padmount tank cover without damaging the transformer internals giving ERMCO the only true 100% powder paint coverage.



## Quality and Reliability

---

- All electrical testing is per IEEE standards.
- Many other tests are made for control purposes such as, core loop loss and exciting current, coil ratio and polarity, oil properties, and multiple oil leak checks.
- ERMCO is an ISO9001 certified company.

## Warranty

---

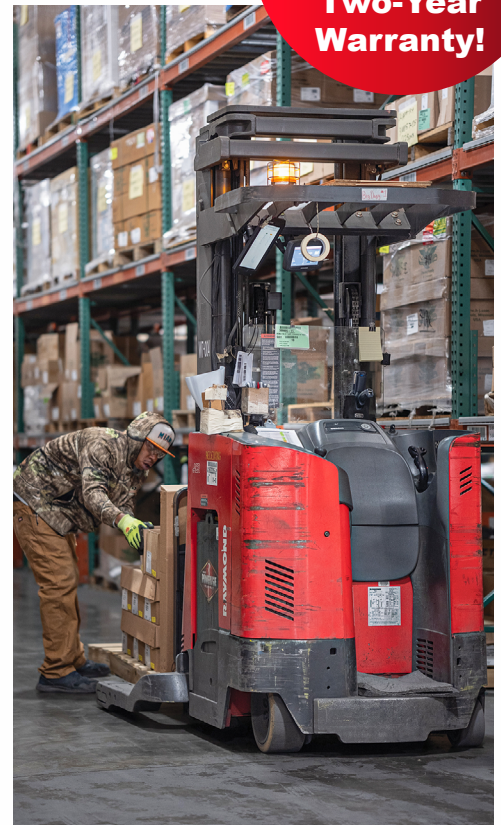
- All ERMCO padmounts carry a full two year warranty.
- Coverage includes round trip transportation between the purchaser's shipping dock and the repair facility.



Accessory	Default Standard	Available
H.V. Fuse	Bayonet with drip shield	Weak link, valve Bayonet, CL fuse (dry well or internal)
L.V. Breaker	None	Magnetic & thermal trip, emergency overload.
Arrester	None	Internal under oil HV arresters LV surge arrester
H.V. Bushings	Wells with fixed stud	Removable stud wells & inserts, integral load break bushings
L.V. Bushings	Stud with jam nut	Stud and spade, integral spade, variety of connectors.
Markings	kVA Decal	Generic or customer specific decals, bar codes, stenciling customer stock codes, serial numbering, and other markings.
Taps/Dual Voltage	Cap Wrench Handle	Lever handle or hook stick handle
Nameplate	Laser etched aluminum	Stainless steel, special information bar code, material stock code, or practically any purchaser data
Tank	Mild steel (green color)	Gray or Tan color, hybrid (stainless pedestal and sill), undercoating, full 304L stainless
Fittings	1/2" drain and fill plug	1" plugs, valves, gauges



**All Padmount Transformers Carry a Full Two-Year Warranty!**



FOR MORE INFORMATION VISIT  
**ERMCO-ECI.COM**



Keep power flowing reliably through your community with ERMCO transformer solutions and compatible components. Visit our components page to learn more about ERMCO-manufactured products designed to deliver lasting performance and value.

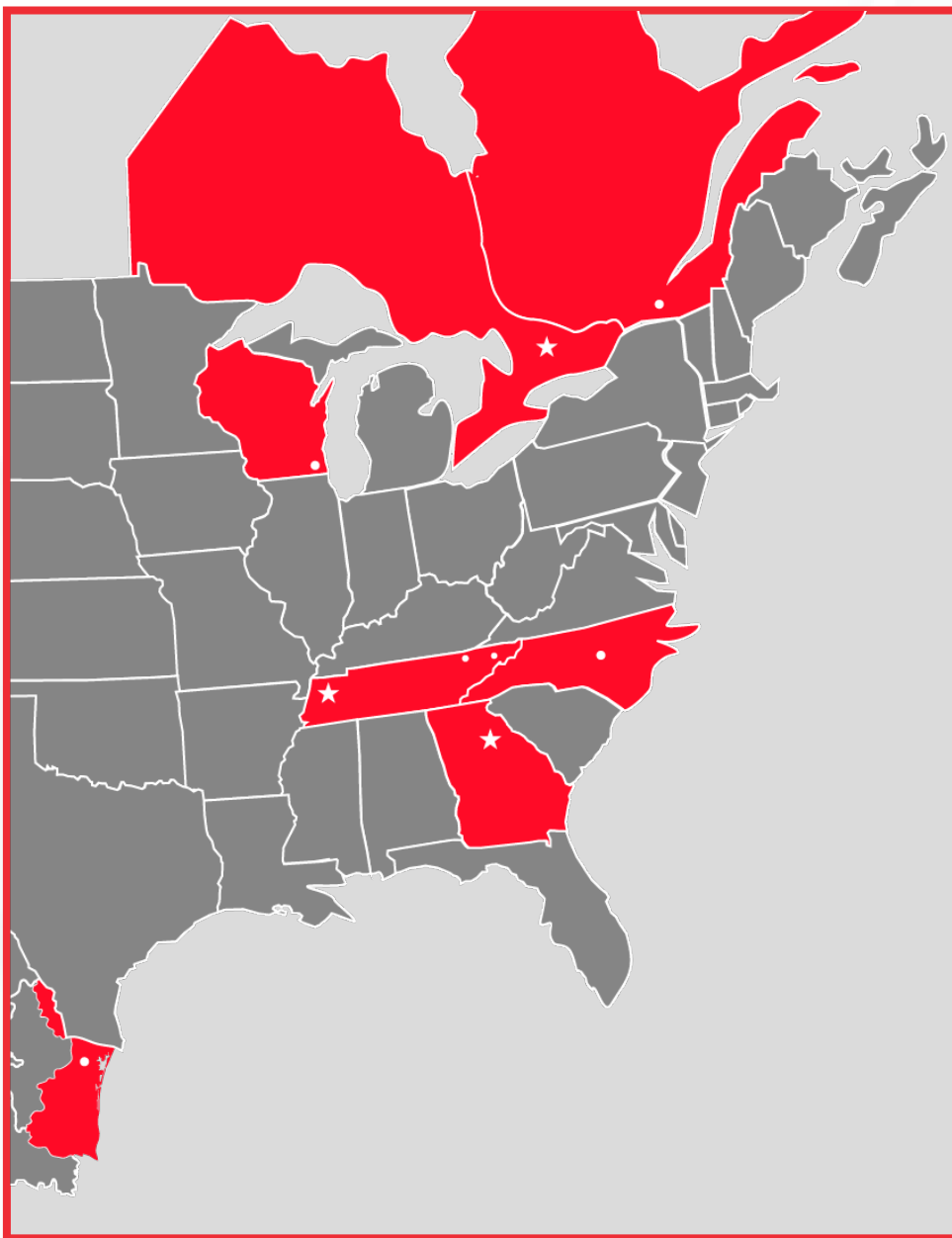


Optional Equipment	Type 1	Type 2	TrimLine	MicroLine
H.V. Taps	•	•	•	•
Dual Voltage	•	•	•	2:1 Ratio Only
Internal Expulsion Fuse Link	•	•	•	•
Bayonet Expulsion Fuse	•	•	•	•
Full Range CL Fuse (Internal)	•	•		
Partial Range CL Fuse (Internal)	•	•	•	•
Secondary Circuit Breaker	•	•	•	•
Under Oil MOV Arrester	•	•	•	•
On-Off High Voltage Switch	•	•		
4 Position High Voltage Switch	•	•		
Removeable Stud Bushing Wells	•	•	•	•
Load Break Bushing Inserts	•	•	•	•
Integral Load Break Bushings	•	•	•	•
L.V. Insulated Stud Bushings	•	•	•	•
L.V. Bushing Spade Terminals	•	•	•	•
Poly Pad	•	•	•	•



**Precision  
Built.  
Customer  
Driven.**





#### **ERMCO-ECI**

2225 Industrial Road,  
Dyersburg, TN 38024  
**731-285-9121**

[WWW.ERMCO-ECI.COM](http://WWW.ERMCO-ECI.COM)

#### **ERMCO COMPONENTS**

1607 Industrial Road,  
Greeneville, TN 37745  
**423-636-6400**

#### **ERMCO COMPONENTS**

13622 101st Street,  
Bristol, WI 53104

#### **ERMCO COMPONENTS**

Seccion 44A Tercera Unidad del Bajo Rio  
San Juan S/N  
Col. Parque Industrial Reynosa  
Reynosa, Tam. Mexico CP 88780  
[WWW.ERMCO-ECI.CO](http://WWW.ERMCO-ECI.CO)

#### **PIONEER TRANSFORMERS**

612 Bernard Road  
Granby, Quebec J2J 0H6  
**450-378-9018**

[WWW.PIONEERTRANSFORMERS.COM](http://WWW.PIONEERTRANSFORMERS.COM)

#### **POWER PARTNERS**

200 Newton Bridge Road,  
Athens, Georgia 30607  
**706-548-3121**

[WWW.POWERPARTNERS-USA.COM](http://WWW.POWERPARTNERS-USA.COM)

#### **GRIDBRIDGE**

7001 Pinecrest Road  
Raleigh, NC 27613  
**984-500-5370**

[WWW.GRID-BRIDGE.COM](http://WWW.GRID-BRIDGE.COM)

#### **ERMCO DRY TYPE TRANSFORMERS**

1125 Walnut Avenue  
Celina, TN 38551  
**931-243-4717**

[WWW.VF-TRANSFORMER.COM](http://WWW.VF-TRANSFORMER.COM)



#### **ERMCO-ECI**

2225 Industrial Road,  
Dyersburg, TN 38024  
**731-285-9121**

[WWW.ERMCO-ECI.COM](http://WWW.ERMCO-ECI.COM)

### **Need help choosing the right transformer?**

Go to our site below to explore our interactive map and connect with a sales expert in your state.

### **View Our Sales Map**

<https://www.ermco-eci.com/contact-us/>